

# Bonhams



New York Jewels

New York | December 8, 2019



# New York Jewels

New York | Sunday, December 8 2019, 2pm

## BONHAMS

580 Madison Avenue  
New York, New York 10022  
[bonhams.com](http://bonhams.com)

## PREVIEW

### Los Angeles

November 8, 2019, 12pm to 5pm  
November 9, 2019, 12pm to 5pm  
November 10, 2019, 12pm to 5pm  
November 11, 2019, 12pm to 5pm

### Hong Kong

November 21, 2019, 10am to 6pm  
November 22, 2019, 10am to 6pm  
November 23, 2019, 10am to 6pm  
November 24, 2019, 10am to 6pm

### New York

December 4, 2019, 10am to 5pm  
December 5, 2019, 10am to 5pm  
December 6, 2019, 10am to 5pm  
December 7, 2019, 12pm to 5pm  
December 8, 2019, 10am to 1pm

## SALE NUMBER:

25501

**CATALOG:** \$35.00

## CUSTOMS DUTY

Customs Duty at the applicable rate and associated import fees are payable by the buyer on all lots marked with an omega symbol (Ω).

## AUCTIONEER

Brett O'Connor - 2080519-DCA

Bonhams & Butterfields  
Auctioneers Corp.  
2077070-DCA



## BIDS

+1 (212) 644 9001  
+1 (212) 644 9009 fax  
[bids.us@bonhams.com](mailto:bids.us@bonhams.com)

To bid via the internet please visit [www.bonhams.com](http://www.bonhams.com)

## TELEPHONE BIDDING

Telephone bidding will only be accepted on a lot with a low estimate in excess of \$1000.

Please note that bids should be submitted no later than 24hrs prior to the sale. New Bidders must also provide proof of identity when submitting bids. Failure to do this may result in your bid not being processed.

## LIVE ONLINE BIDDING IS AVAILABLE FOR THIS SALE

Please email [bids.us@bonhams.com](mailto:bids.us@bonhams.com) with "Live bidding" in the subject line 48hrs before the auction to register for this service.

Please see pages 71 to 75 for bidder information including conditions of sale, after-sale collection and shipment.

## INQUIRIES

Jean Ghika  
Global Head of Jewelry  
[jean.ghika@bonhams.com](mailto:jean.ghika@bonhams.com)

### New York

+1 (212) 461 6526  
Brett O'Connor, Senior International Jewelry Director  
Caroline Morrissey, Head of Sales, US Jewelry  
Leslie Roskind, Senior Specialist  
Ophelia Lai, Cataloger  
Stephanie Ibonnet, Administrator

### Los Angeles

+1 (323) 436 5424  
Emily Waterfall, Director  
Augustus Poppleton, Cataloger  
Alexandra Schettini, Administrator

### San Francisco

+1 (415) 503 3306  
Shannon Beck, G.G., Senior Specialist  
[shannon.beck@bonhams.com](mailto:shannon.beck@bonhams.com)

## COLLECTION

Successful buyers with San Francisco and Los Angeles shipping addresses will have their purchases shipped to the Bonhams Los Angeles office for pick-up and/or further delivery.

If you have a San Francisco or Los Angeles shipping address and do not want your purchase sent there for collection please notify us directly by Monday December 9, 2019. Purchases will be available for pick-up in Los Angeles on Thursday December 12, 2019.

## ILLUSTRATIONS

Front cover: lot 102  
Inside front: lots 84 and 67  
Current page: lot 8  
Session page: lot 77  
Back cover: lot 106  
Inside back cover: lot 13

## REGISTRATION IMPORTANT NOTICE

Please note that all customers, irrespective of any previous activity with Bonhams, are required to complete the Bidder Registration Form in advance of the sale.

The form can be found at the back of every catalogue and on our website at [www.bonhams.com](http://www.bonhams.com) and should be returned by email or post to the specialist department or to the bids department at [bids.us@bonhams.com](mailto:bids.us@bonhams.com)

To bid live online and / or leave internet bids please go to [www.bonhams.com/auctions/25501](http://www.bonhams.com/auctions/25501) and click on the Register to bid link at the top left of the page.



## Including Property From

Property of an International Collector  
Property from the Collection of Mrs. H. C. Price  
Property from a New York Collection  
Property from a Private Collection  
Property of a Lady  
Property of a Los Angeles Lady  
Property of a Los Angeles, California Collector  
Property from the Estate of Joan Z. Steinbrenner  
Property of a New York Lady  
Property of a Santa Barbara, California Collector  
Property from a Seattle, Washington Collection  
Property from a Virginia Collection  
Property from a Los Altos Hills, California Collector  
Property from a Florida Collector



## INDEX

NAME	LOT NUMBER
André Vassort	5
Audemars Piguet	16, 33, 34
Boucehron	71
Buccellati	14, 18
Bulgari	43, 60, 75, 101
Cartier	42, 68, 69, 73, 80, 83, 92, 93, 94, 103, 104
Castellani	17
Chaumet	76
Elizabeth Gage	15, 19
Frank Gehry for Tiffany & Co.	97
Gübelin	51
Harry Winston	60
Henry Dunay	100
Jean Schlumberger for Tiffany & Co.	20
Kutchinsky	1, 49
Marcus & Co.	79
Peacock	8
Piaget	95
René Boivin	25
Rolex	3, 4
Seaman Schepps	21
Van Cleef & Arpels	11, 31, 36, 37, 74, 106

DIAMOND GRADING

COLOR

GIA	CIBJO	UK TRADITIONAL
D	Exceptional White +	Finest White
E	Exceptional White	Finest White
F	Rare White +	Fine White
G	Rare White	Fine White
H	White	White
I	Slightly Tinted White	Commercial White
J	Slightly Tinted White	Top Silver Cape
K	Tinted White	Top Silver Cape
L	Tinted White	Silver Cape
M TO N	Tinted Color	Light Cape
O TO R	Tinted Color	Cape
R TO Z	Tinted Color	Dark Cape

CLARITY

IF	Internally Flawless	No inclusions and only insignificant surface blemishes when viewed under 10X magnification
VVS1 - VVS2	Very Very Slightly Included	Minute inclusions that are incredibly difficult to see under 10X magnification, generally only visible from the back of the stone and may be removed easily by repolishing
VS1 - VS2	Very Slightly Included	Minor inclusions that range from difficult (VS1) to slightly easier (VS2) to see under 10X magnification
S11 - 2	Slightly Included	Noticeable inclusions that are easy (S11) or very easy (S12) to see under 10X magnification
I1 - 3	Obvious Inclusions	Obvious inclusions that are easily visible under 10X magnification and in some cases may even be seen without magnification

RING SIZES

ENGLISH	METRIC	AMERICAN	FRENCH/JAPANESE
A	37.8252	½	-
A½	38.4237	¾	-
B	39.0222	1	-
B½	39.6207	1¼	-
C	40.2192	1½	-
C½	40.8177	1¾	-
D	41.4162	2	1
D½	42.0147	2¼	2
E	42.6132	2½	-
E½	43.2117	2¾	3
F	43.8102	3	4
F½	44.4087	3¼	-
G	45.0072	3½	5
G½	45.6057	3¾	-
H	46.2042	4	6
H½	46.8027	4¼	-
I	47.4012	4½	7
I½	47.9997	4¾	8
J	48.5982	5	-
J½	49.1967	5¼	9
K	49.7952	5½	10
K½	50.3937	5¾	-
L	50.9922	6	11
L½	51.5907	6¼	-
M	52.1892	6½	12
M½	52.7877	6¾	13
N	53.4660	7	-
N½	54.1044	7¼	14
O	54.7428	7½	15
O½	55.3812	7¾	-
P	56.0196	8	16
P½	56.6580	8¼	-
Q	57.2964	8½	17
Q½	57.9348	8¾	18
R	58.5732	9	-
R½	59.2116	9¼	19
S	59.8500	9½	20
S½	60.4884	9¾	-
T	61.1268	10	21
T½	61.7652	10¼	22
U	62.4026	10½	-
U½	63.0420	10¾	23
V	63.6804	11	24
V½	64.3188	11¼	-
W	64.8774	11½	25
W½	65.4759	11¾	-
X	66.0744	12	26
X½	66.6729	12¼	-
Y	67.2714	12½	-
Y½	67.8699	12¾	-
Z	68.4684	13	-

# Property of a Lady

Lots 1 - 2



**1**  
**A GOLD AND DIAMOND DEMI-PARURE, KUTCHINSKY**  
comprising a ring, designed as a blooming cactus, the flower set with round brilliant-cut diamonds, to a surround of radiating gold batons; the earrings of similar design with diamonds set off-center; signed Kutchinsky, with maker's mark; the ring stamped with English hallmarks; accompanied by signed fitted box; estimated total diamond weight: 4.30 carats; mounted in 18k gold; earclip length: 7/8 in.; ring size 3

**\$3,500 - 5,500**

**2**  
**A GOLD AND DIAMOND NECKLACE**  
designed as two semi-flexible gold chains, gathered to the front with a half hoop set with two rows of round brilliant-cut diamonds; with maker's mark and English hallmarks; estimated total diamond weight: 1.50 carats; mounted in 18k gold; length: 15 in.

**\$3,500 - 5,500**



# Property of an International Collector

Lots 3 - 4



3

3  
**A GOLD WRISTWATCH, ROLEX, CELLINI**  
the circular black monogrammed dial with applied baton numerals, gold bezel, hooded lugs and brown leather strap with a deployant buckle, quartz movement; *dial and buckle signed Rolex, caseback nos. 6622, S107704, with Swiss assay marks; gross weight approximately: 58.05 grams; mounted in 18k gold; circumference: 6 in. (adjustable)*

\$2,000 - 4,000



4

4  
**A GOLD WRISTWATCH, ROLEX, CELLINI**  
the circular golden monogrammed dial with applied baton numerals, gold bezel, hooded lugs and black leather strap with a deployant buckle, quartz movement; *dial and buckle signed Rolex, caseback nos. 6622, S107465, with Swiss assay marks; gross weight approximately: 58.15 grams; mounted in 18k gold; circumference: 6 in. (adjustable)*

\$2,000 - 4,000



5



6



7

**5**  
**A DIAMOND AND EMERALD RING,**  
**ANDRÉ VASSORT, FRANCE**  
of stylized swirl design, pavé-set with round brilliant-cut diamonds, accented with circular-shaped emeralds to a textured gold band; with French marker's mark and assay marks; estimated total diamond weight: 5.20 carats; mounted in 18k yellow and white gold; size 6 1/2

**\$5,000 - 7,000**

**6**  
**AN EMERALD AND DIAMOND BRACELET**  
designed as a series of stylized floral clusters, set with twelve cut-cornered rectangular-shaped emeralds, weighing approximately 6.00 carats in total, to a surround of round brilliant and baguette-cut diamonds; estimated total diamond weight: 15.20 carats; mounted in platinum; length: 7 in.

**\$6,000 - 9,000**

**7**  
**A FANCY COLORED DIAMOND AND DIAMOND RING**  
centering a pear-shaped modified brilliant-cut Fancy Vivid Yellow diamond, weighing 3.02 carats, flanked by pear-shaped diamonds; mounted in platinum and 18k gold; size 6  
**\$28,000 - 38,000**

Accompanied by GIA report # 2155924498, dated February 10, 2014, stating the diamond as: Fancy Vivid Yellow color, SI2 clarity.



8



10



9

**PROPERTY FROM THE COLLECTION OF MRS. H. C. PRICE**

**PROPERTY FROM A NEW YORK COLLECTION**

8  
**A SAPPHIRE AND DIAMOND FLOWER BROOCH, PEACOCK**  
the petals set with alternating fancy-cut sapphires and round brilliant and baguette-cut diamonds, to the diamond and colored diamond pistils, the stems and buds set with further round brilliant and single-cut diamonds; *signed Peacock; estimated total diamond weight: 3.20 carats; mounted in platinum; length: 2 in.*

**\$7,000 - 10,000**

Colored diamonds untested for origin of color.

9  
**A DIAMOND PENDANT**  
centering a pear-shaped Fancy Intense Yellow diamond, weighing 0.56 carats, to a surround of round brilliant-cut diamonds and colored diamonds; *estimated total diamond weight: 1.40 carats; mounted in 14k gold; length: 3/4 in.*

**\$2,000-4,000**

Accompanied by GIA report # 5202724918, dated November 8, 2019, stating the 0.56 carat diamond as: Fancy Intense Yellow color, SI1 clarity.

Round colored diamonds untested for origin of color.

10  
**A PAIR OF DIAMOND EARCLIPS**  
set with a pair of old mine-cut diamonds, weighing 3.42 and 3.94 carats, encircled by a cluster of similarly cut diamonds; *estimated total diamond weight: 12.50 carats; mounted in 18k white gold; length: 5/8 in.*

**\$15,000 - 25,000**



11

11  
**AN 18K GOLD AND DIAMOND 'CADENAS' WRISTWATCH, VAN CLEEF & ARPELS**  
designed as a lock, the silvered guilloché dial with diamond set index created within the gold buckle with round brilliant-cut diamond detail, to a leather strap, quartz movement; case and strap signed Van Cleef & Arpels, no. 150281, with maker's mark and Swiss control marks; gross weight approximately: 79.45 grams; mounted in 18k gold; circumference: 5 7/8 in.

\$4,000 - 7,000



12

12  
**AN 18K GOLD AND DIAMOND BRACELET, FRANCE**  
the highly flexible woven gold band, set with gold fan detail, accented with bezel-set round brilliant-cut diamonds; with French assay marks; gross weight approximately: 78.05 grams; mounted in 18k gold; length: 7 in.

\$6,000 - 10,000



13



(alternate view)



14

**PROPERTY FROM A PRIVATE COLLECTION**

13  
**AN ENAMEL WATCH PENDANT, FRANCE, CIRCA 1925**  
the white cut-cornered square dial applied with black Arabic numerals and blue steel hands, with stepped enamel bezel and pendant hook, the back decorated with ornate enamel landscape, manual-wind mechanical movement; with French assay marks; crown deficient; accompanied by fitted box; gross weight approximately: 64.05 grams; mounted in 18k gold; length: 1 11/16 in.

\$5,000 - 7,000

14  
**AN 18K GOLD BANGLE, BUCCELLATI, ITALY**  
the hinged bangle of twisted sculptural design, with grooves featuring fine rigato gold engraving; signed M. Buccellati, with maker's mark; gross weight approximately: 73.35 grams; circumference: 6 3/4 in.

\$3,000 - 5,000



15



16



17

15  
**A PAIR OF DIAMOND, CARNELIAN AND JASPER 'AFRICAN QUEEN' EARCLIPS, ELIZABETH GAGE**

each set with an oval carnelian cabochon in a coiled gold surround, accented with a round brilliant-cut diamond to the top and three round leopard jasper beads to the base; *signed Gage, with maker's mark and English hallmarks; accompanied by signed box; mounted in 18k gold; length: 1 3/8 in.*

**\$2,000 - 3,000**

16  
**AN UNUSUAL DIAMOND AND GARNET WRISTWATCH, AUDEMARS PIGUET**

the navette-shaped guilloché dial with faceted garnet crystal face, the bezel set with round brilliant-cut diamonds extending to a multi-row gold bead tapered bracelet with diamond detail, quartz movement; *dial signed AP; clasp and caseback signed Audemars Piguet, no. C34227, with Swiss assay marks; estimated total diamond weight: 2.10 carats; mounted in 18k gold; length: 6 3/8 in.*

**\$3,500 - 5,500**

17  
**A GOLD AND COIN BROOCH, CASTELLANI, CIRCA 1900**

the gold coil mount set with a pair of Roman coins, the left featuring the helmeted head of Roma, its reverse of Dioscuri riding, the right featuring Vejovis hurling thunderbolts, its reverse of Minerva with javelin and shield riding quadriga; *with maker's mark; gross weight approximately: 13.95 grams; mounted in 18k gold; width: 1 17/18 in.*

**\$4,000 - 6,000**





18

**AN 18K GOLD AND DIAMOND NECKLACE, BUCCELLATI**

designed as a series of etched gold leaves, with round brilliant-cut diamond-set leaves interspersed, to the central diamond-set flower; signed Buccellati; estimated total diamond weight: 1.40 carats; mounted in 18k yellow and white gold; length: 16 1/2 in.

\$5,000 - 7,000



19



20

19  
**A GOLD, AQUAMARINE AND GARNET NECKLACE,  
ELIZABETH GAGE**

the multi-strand necklace composed of garnet beads, measuring approximately 3.20 mm, to a stylized gold clasp set with a large milky aquamarine oval cabochon, enhanced with circular-shaped amethysts; signed Gage, with maker's mark and English hallmarks; accompanied by signed pouch; mounted in 18k gold; length: 18 in.

\$3,000 - 5,000

20  
**AN 18K GOLD, SAPPHIRE AND RUBY PIN,  
JEAN SCHLUMBERGER FOR TIFFANY & CO., FRANCE**

designed as a chestnut, the brooch created in gold with circular-shaped yellow sapphires and rubies, further adorned with textured gold leaf detail; signed Tiffany Schlumberger Paris, with maker's mark and French assay marks; mounted in 18k gold; length: 1 5/8 in.

\$6,000 - 9,000





21

**PROPERTY OF A LADY**

**21  
AN OPAL, RUBY, AND DIAMOND BRACELET,  
SEAMAN SCHEPPS**

composed of three strands of round opal beads, measuring approximately from 4.50 to 6.00 mm, with ruby and crystal spacers, the clasp set with a large, oval cabochon opal, measuring approximately 22.20 x 17.75 x 8.15 mm, with old European-cut diamond and ruby cabochon detail; *signed Seaman Schepps; mounted in 14k gold; length: 7 in.*

**\$4,000 - 6,000**



22

**22  
AN 18K GOLD, DIAMOND AND GEM-SET BANGLE, ITALY**

the scrolling openwork hinged bangle created in hammered gold with emerald and ruby cabochons, further adorned with round brilliant-cut diamonds and cultured pearls; *gross weight approximately: 103.10 grams; circumference: 7 in.*

**\$3,500 - 5,500**



23  
**A DIAMOND BROOCH, FRANCE**  
 of geometric openwork design, centrally set with an old European-cut diamond, weighing approximately 1.10 carats, enhanced with baguette and further old European-cut diamond detail; with French assay mark; estimated total diamond weight: 8.20 carats; mounted in platinum; width: 2 1/8 in.

**\$4,000 - 6,000**

24  
**A RUBY AND DIAMOND BRACELET**  
 designed as three intertwined rows of round brilliant and single-cut diamonds and calibr -cut rubies; estimated total diamond weight: 3.50 carats; mounted in platinum; length: 7 in.

**\$12,000 - 18,000**

**PROPERTY OF A LOS ANGELES LADY**

25  
**A PAIR OF NATURAL PEARL, DIAMOND AND ONYX EARRINGS, REN  BOIVIN, CIRCA 1920**

of geometric design, the pendants set with single-cut diamonds, calibr -cut onyx and natural pearl drops, measuring 8.30 x 7.37 mm and 8.34 x 7.17 mm, surmounted by a line of single-cut and old European-cut diamonds; one earring post stamped with maker's mark for Ren  Boivin; accompanied by signed fitted box; deficient one earring back; mounted in platinum; length: 1 1/2 in.

**\$7,000 - 9,000**

Accompanied by GIA report # 1206719974, dated November 6, 2019, stating the pearls as: Natural, Saltwater, no indications of treatment.



26



27



28

26

**A SAPPHIRE AND DIAMOND RING**

centering an oval-shaped mixed-cut sapphire, weighing 12.57 carats, framed and accented by single-cut diamonds; *no. 37739; mounted in platinum; size 5 3/4*

**\$12,000 - 18,000**

Accompanied by GIA report # 5202507769, dated August 15, 2019, stating the sapphire as: Sri Lanka origin, no indications of heating.

27

**AN ONYX AND DIAMOND BROOCH, CIRCA 1915**

designed as a bow, set with onyx, old European and single-cut diamonds; *estimated total diamond weight: 1.70 carats; mounted in platinum; width: 2 1/4 in.*

**\$2,500 - 3,500**

28 □

**A RUBY AND DIAMOND RING**

centering a cushion-shaped ruby, weighing 3.54 carats, framed and accented by round brilliant-cut diamonds; *with French import mark; mounted in 18k white gold; size 7 1/4*

**\$10,000 - 15,000**

Accompanied by GRS report # 2010-122244, dated December 28, 2010, stating the ruby as: Winza (Tanzania) origin, no indications of thermal treatment.

Offered without reserve.



29



31



30

29

**A DIAMOND BROOCH, CIRCA 1925**  
designed as an openwork landscape set with single, marquise and old European-cut diamonds; *estimated total diamond weight: 1.60 carats; mounted in platinum; length: 1 1/2 in.*

**\$2,500 - 3,500**

30

**A NATURAL PEARL AND DIAMOND RING**  
centering an oval-shaped natural pearl, measuring 12.03 x 10.22 mm (length not measurable), to a surround of old mine-cut diamonds; *estimated total diamond weight: 4.60 carats; mounted in platinum and 14k gold; size 6*

**\$3,500 - 5,500**

Accompanied by GIA report # 2205725442, dated November 7, 2019, stating the pearl as: Natural, Saltwater, no indications of treatment.

**PROPERTY OF A LOS ANGELES, CALIFORNIA COLLECTOR**

31

**AN 18K WHITE GOLD AND DIAMOND WRISTWATCH, VAN CLEEF & ARPELS, CIRCA 1995**

the circular dial pavé-set with single-cut diamonds, with baguette-cut diamonds at three, six, nine and twelve o'clock, the bezel set with round brilliant and square-shaped step-cut diamonds, the articulated bracelet set throughout with similarly cut diamonds, quartz movement; *dial signed Van Cleef & Arpels, case nos. 33139 B1BC and 82408, with Swiss assay marks; estimated total diamond weight: 18.65 carats; mounted in 18k white gold; length: 7 1/2in.*

**\$12,000 - 18,000**



32

32

**A PLATINUM, SEED PEARL AND DIAMOND NECKLACE,  
FRANCE, CIRCA 1905**

the kite-shaped front suspending a ribbon bow and pendant of openwork design, millegrain-set with old European and single-cut diamonds, to a lattice-work seed pearl chain with diamond openwork clasp; *no. 5936, with maker's mark and French assay marks; estimated total diamond weight: 8.80 carats; mounted in platinum; length: 12 3/4 in.*

**\$15,000 - 25,000**



33

33  
**A DIAMOND WATCH PENDANT,  
 AUDEMARS PIGUET**

the white cushion-shaped dial applied with Roman numerals and black hands, the bezel and pendant hook set with round brilliant-cut diamonds, manual-wind mechanical movement; *dial signed Audemars Piguet, case no. 59061, with Swiss assay marks; estimated total diamond weight: 2.00 carats; mounted in 18k white gold; length: 2 in.*

**\$3,000 - 5,000**



34

34  
**A PLATINUM AND DIAMOND WATCH  
 PENDANT, AUDEMARS PIGUET & CO.**

the silvered circular-shaped dial applied with Roman numerals and hands set with rose-cut diamonds, the bezel set with round brilliant-cut diamonds with black enamel border, suspended from a seed pearl and single cut-diamond drop, nineteen-jewel, manual-wind mechanical movement; *dial signed Audemars Piguet & Co., case no. 35816; inscribed with personal dedication; estimated total diamond weight: 1.70 carats; mounted in platinum; length: 2 1/8 in.*

**\$2,000 - 4,000**



35

35  
**A PLATINUM AND DIAMOND BROOCH,  
 VAN CLEEF & ARPELS, NEW YORK**

designed as a cluster of marquise-shaped and round brilliant-cut diamonds, interlaced with a ribbon of baguette-cut diamonds; *signed VCA, no. NY57414; accompanied by signed box; estimated total diamond weight: 8.20 carats; mounted in platinum; length: 2 in.*

**\$14,000 - 18,000**





36

36  
**A STYPTOR AND DIAMOND MINAUDIÈRE,  
 VAN CLEEF & ARPELS, CIRCA 1935**

of engine turned rectangular form with reeded central panels, rose gold geometric bar decoration with pavé-set single-cut diamond arched detail and rose gold catch, opening to reveal a removable powder compact of similar design, two hinged compartments, a lighter, one open compartment and fitted mirror; *signed La Minaudière de Van Cleef & Arpels, nos. 44336 and 1823; lighter no. 48781; gross weight approximately 625.90 grams; measuring approximately 5 15/16 x 4 13/16 x 13/16 in.*

**\$2,000 - 3,000**

37  
**A COLORED DIAMOND AND DIAMOND RING**

centering a pear-shaped brilliant-cut colored diamond, weighing approximately 2.70 carats, flanked by two 0.30 carat pear-shaped diamonds, to a surround of pavé-set round brilliant-cut diamonds; *estimated total diamond weight: 4.30 carats; mounted in 18k white gold; size 6 1/2*

**\$7,500-10,000**

Colored diamond untested for origin of color.

Accompanied by GIA report # 5191426549, dated October 26, 2010, stating the 0.30 carat diamond as: D color, VS1 clarity.

Accompanied by GIA report # 5191426549, dated November 17, 2010, stating the 0.30 diamond as: D color, VS2 clarity.



37



38



39



40

38

**AN AMETHYST AND DIAMOND RING**  
centering a large cabochon-cut amethyst, weighing approximately 33.70 carats, framed by a spray of tapered baguette-cut diamonds; *estimated total diamond weight: 2.30 carats; mounted in platinum; size 5 (adjustable to 5 1/2)*

**\$3,000 - 5,000**

39

**A PLATINUM AND DIAMOND BRACELET**  
designed as a line of thirty-seven round brilliant-cut diamonds; *signed Boucheron; estimated total diamond weight: 14.80 carats; mounted in platinum; length: 7 3/16 in.*

**\$12,000 - 18,000**

40

**A FANCY COLORED SAPPHIRE AND DIAMOND RING**  
centering an oval-shaped, modified brilliant-cut purple sapphire, weighing 6.07 carats, decorated with rose and old mine-cut diamonds; *with English hallmarks; mounted in 18k white gold; size: 4 1/2 (adjustable to 5 1/2)*

**\$9,000 - 12,000**

Accompanied by GIA report # 1152240801, dated February 19, 2013, stating the sapphire as: Natural, with no indications of heating.





41

41

**A DIAMOND AND SEED PEARL CHOKER-NECKLACE**

the central plaque set with a cluster of old mine-cut diamonds to decorative openwork mounting, flanked by nine rows of seed pearls, accented by two bar links with collet-set diamonds; *central plaque detaches and may be worn as a pendant; estimated total diamond weight: 5.35 carats; mounted in silver and 18k yellow and white gold; length: 13 1/2 in.*

**\$5,000 - 7,000**



42

(alternate view)

42  
**A SAPPHIRE AND DIAMOND RING, MONTURE CARTIER, FRANCE**

centering a claw-set modified cushion-cut sapphire, weighing 10.70 carats, flanked by pavé-set round brilliant and baguette-cut diamonds; *signed Monture Cartier, with French assay marks; estimated total diamond weight: 1.20 carats; mounted in platinum; size 5 3/4*

**\$45,000 - 65,000**

Accompanied by AGL report # CS 1078042, dated October 31, 2016, stating the sapphire as: Ceylon (Sri Lanka) origin, no indications of heat or clarity enhancement.

Accompanied by a certificate for insurance from Cartier Paris, dated September 15, 1961.



43

43  
**A PLATINUM, YELLOW SAPPHIRE AND DIAMOND 'TROMBINO' RING, BULGARI**

centering a cushion-cut yellow sapphire, weighing 10.26 carats, the mounting set with round brilliant and baguette-cut diamonds; *signed Bulgari; estimated total diamond weight: 2.50 carats; mounted in platinum; size 6 1/2*

**\$15,000 - 20,000**

Accompanied by GIA report # 6207708360, dated November 1, 2019, stating the sapphire as: Sri Lanka origin, no indications of heating.



44

44

**A PAIR OF MULTI-COLORED SAPPHIRE AND DIAMOND EAR PENDANTS**

featuring bezel-set pear-shaped sapphires of pink, purple, blue, green and yellow hues, weighing approximately 25.40 carats, with similarly set heart-shaped and round brilliant-cut diamond accents; *estimated total diamond weight: 1.75 carats; mounted in platinum and 18k gold; length: 2 1/4 in.*

**\$5,000 - 8,000**



45

45

**A FANCY COLORED DIAMOND AND DIAMOND RING**

centering a modified cushion-shaped brilliant-cut Fancy Intense Yellow diamond, weighing 8.08 carats, flanked by trapezoid-shaped diamonds; *estimated remaining diamond weight: 1.00 carats; mounted in platinum; size 7*

**\$120,000 - 180,000**

Accompanied by GIA report # 1206403948, dated July 02, 2019, stating the diamond as: Fancy Intense Yellow color, VS2 clarity.



46

**A FANCY COLORED DIAMOND AND DIAMOND RING**

centering a cut-cornered rectangular-shaped modified brilliant-cut Fancy Vivid Yellow diamond, weighing 3.05 carats, flanked by triangular-shaped diamonds; *estimated remaining diamond weight: 1.30 carats; mounted in platinum and 18k gold; size 6*

**\$45,000 - 65,000**

Accompanied by a GIA report # 1149362326, dated March 14, 2018, stating the diamond as: Fancy Vivid Yellow color, VS2 clarity.



47

**A FANCY COLORED DIAMOND AND DIAMOND RING**

centering a pear-shaped brilliant-cut Fancy Yellow diamond, weighing 6.98 carats, flanked by pavé-set round brilliant-cut colored diamonds to the sides and gallery; *mounted in 18k gold; size 5 3/4*

**\$32,000 - 42,000**

Accompanied by GIA report # 6292557699, dated July 12, 2018, stating the 6.98 carat diamond as: Fancy Yellow color, SI1 clarity.

Round colored diamonds untested for origin of color.



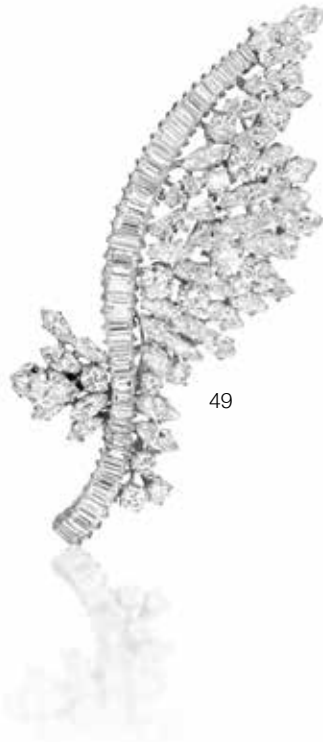
48

48  
**A FANCY COLORED SAPPHIRE  
AND DIAMOND RING**

centering a cushion-shaped mixed-cut Padparadscha sapphire, weighing 7.46 carats, framed by a cluster of round brilliant-cut and heart-shaped diamonds, the shoulders enhanced by further round brilliant-cut diamond detail; *estimated total diamond weight: 2.63 carats; mounted in platinum; size 6 1/4*

**\$20,000 - 30,000**

Accompanied by GRS report # GRS2019-069142, dated June 20, 2019, stating the sapphire as: Natural Padparadscha, Sri Lanka origin, no indications of thermal treatment.



49

49  
**A DIAMOND BROOCH, KUTCHINSKY**  
of stylized foliate design, set with pear and marquise-shaped, and round brilliant-cut diamonds, to a baguette-cut diamond stem; *signed Kutchinsky; estimated total diamond weight: 15.00 carats; mounted in platinum; length: 3 1/2 in.*

**\$8,000 - 12,000**



50

**PROPERTY OF A SANTA BARBARA,  
CALIFORNIA COLLECTOR**

50  
**AN 18K GOLD AND DIAMOND BROOCH,  
FRANCE**

designed as flower, set with round brilliant-cut diamond petals, pistils and leaves, accented with gold coil detail; *with French assay marks; estimated total diamond weight: 9.50 carats; mounted in platinum and 18k gold; length: 2 in.*

**\$3,500 - 5,500**



51



52



53

**PROPERTY OF A NEW YORK LADY**

51  
**A PAIR OF DIAMOND EARCLIPS, GÜBELIN**  
 of floral spray design, set throughout with round brilliant, baguette and single-cut diamonds; with maker's mark; estimated total diamond weight: 9.30 carats; mounted in 18k white gold; length: 1 7/8 in.

**\$6,000 - 10,000**

52  
**A DIAMOND BRACELET, CIRCA 1930**  
 the wide openwork bracelet of geometric design, millegrain-set with old European and single-cut diamonds; estimated total diamond weight: 15.20 carats; mounted in platinum; length: 7 5/16 in.

**\$15,000 - 20,000**

53  
**A SAPPHIRE AND DIAMOND RING**  
 centering a cushion-shaped mixed-cut sapphire, weighing 18.65 carats, framed and accented by single-cut diamonds; estimated total diamond weight: 1.00 carat; mounted in 18k white gold; size 6

**\$12,000 - 18,000**

Accompanied by GIA report # 2203507767, dated August 14, 2019, stating the sapphire as: Sri Lanka origin, no indications of heating.



54



55

54

**AN EMERALD AND DIAMOND BRACELET**

composed of five strands of emerald beads, the geometric openwork panel centrally set with a diamond-shaped emerald to a surround of round brilliant, baguette and single-cut diamonds, the links enhanced with calibr -cut emeralds, the spacers bezel-set with clusters marquise-shaped diamonds; *accompanied by additional emerald beads; estimated total diamond weight: 11.00 carats; mounted in platinum; length: 6 1/2 in.*

**\$10,000 - 15,000**

55

**AN EMERALD, DIAMOND, AND ONYX BROOCH**

designed as an old mine and single-cut diamond cascade gathered by cabochon emeralds to the onyx detail and collet-set terminals; *estimated total diamond weight: 2.70 carats; mounted in platinum; length: 2 1/4 in.*

**\$4,000 - 6,000**



56



57

## PROPERTY OF A LADY

56

### AN ALEXANDRITE AND DIAMOND RING

centering a cushion-shaped mixed-cut alexandrite, weighing 8.61 carats, flanked by a pair of pear-shaped diamonds, and framed by a double row of round brilliant-cut diamonds; *estimated total diamond weight: 2.20 carats; mounted in platinum; size 4 1/4*

**\$6,000 - 8,000**

Accompanied by AGL report # 1104063, dated October 18, 2019, stating the alexandrite as: Ceylon (Sri Lanka) origin, no indications of clarity enhancement, degree of color change: moderate, quality of color change: good to fair.

57

### A SAPPHIRE AND DIAMOND RING

centering an oval-shaped mixed-cut sapphire, weighing 7.46 carats, framed by a halo of round brilliant-cut diamonds and an outer frame of heart-shaped diamonds alternating with round brilliant-cut pink and colorless diamonds, the shoulders enhanced by round brilliant-cut diamonds; *estimated total diamond weight: 2.30 carats; mounted in platinum; size 6 1/2*

**\$7,000 - 10,000**

Accompanied by Gübelin report # 19051199, dated June 6, 2019, stating the sapphire as: Sri Lanka (Ceylon) origin, with no indications of heating.

Colored diamonds untested for origin of color.





58

58

**A DIAMOND NECKLACE**

of openwork floral design, millegrain-set with round brilliant-cut diamonds; may be shortened to form a choker and convertible to form two bracelets; estimated total diamond weight: 15.20 carats; mounted in platinum; length of necklace: 15 3/4 in.; length of choker: 14 in.; length of bracelet: 7 in. each

**\$8,000 - 10,000**



59

60

#### PROPERTY OF A LADY

59

##### **A SAPPHIRE AND DIAMOND BRACELET, HARRY WINSTON**

composed of three rows of circular-cut sapphires, with pear-shaped and round brilliant-cut diamonds interspersed throughout; *with Jacques Timey maker's mark for Harry Winston; estimated total diamond weight: 16.25 carats; mounted in platinum; length: 7 in.*

**\$30,000 - 50,000**

60

##### **A FINE SAPPHIRE AND DIAMOND 'TROMBINO' RING, BULGARI**

of raised dome design, horizontally-set with a rectangular-shaped step-cut sapphire, weighing 16.98 carats, flanked by a graduated row of baguette-cut diamonds, to a surround of pavé-set round brilliant-cut diamonds; *signed Bulgari; estimated total diamond weight: 4.90 carats; mounted in platinum; size 6*

**\$180,000 - 250,000**

Accompanied by SSEF report # 86738, dated July 4, 2016, stating the sapphire as: Burma (Myanmar) origin, no indications of heating.





61

62

63

61  
**A YELLOW SAPPHIRE AND DIAMOND RING**  
 centering a cushion-shaped mixed-cut yellow sapphire, weighing 10.89 carats, framed and accented by pavé-set round brilliant-cut diamonds; mounted in 18k white gold; size 7 1/4

**\$12,000 - 18,000**

Accompanied by AGL report # 1091489, dated April 10, 2018, stating the sapphire as: Ceylon (Sri Lanka) origin, no indications of heat or clarity enhancement.

**PROPERTY FROM A SEATTLE, WASHINGTON COLLECTION**

62  
**AN EMERALD AND DIAMOND BRACELET, FRANCE**  
 of flexible design, set with alternating rows of round brilliant-cut diamonds and pear-shaped emeralds; with French assay marks; estimated total diamond weight: 27.65 carats; mounted in platinum; length: 7 in.

**\$20,000 - 30,000**

**PROPERTY FROM A VIRGINIA COLLECTION**

63  
**A PAIR OF DIAMOND AND EMERALD EARRINGS**  
 the foliate surmounts set with marquise-shaped, old mine and single-cut diamonds, suspending a briolette-cut emerald drop; accompanied by a fitted box; estimated total diamond weight: 1.20 carats; mounted in 18k white gold; length: 1 6/8 in.

**\$8,000 - 12,000**



64



64

**A DIAMOND BROOCH TOGETHER WITH A PAIR OF DIAMOND EARCLIPS**

the brooch, designed as a cascade of round brilliant, single and baguette-cut diamonds; the earclips designed as a ribbon of old European and single-cut diamonds, with a spray of collet-set diamonds; earclips with French assay marks; estimated total diamond weight of brooch and earclips: 9.40 and 1.40 carats, respectively; mounted in platinum; length of brooch: 2 3/4 in.; length of earclips: 1 in.

**\$3,000 - 5,000**



65

**PROPERTY OF A NEW YORK LADY**

65

**AN EMERALD AND DIAMOND RING**

centering a cushion-shaped emerald, weighing approximately 5.40 carats, flanked by two triangular-shaped colored diamonds; estimated total diamond weight: 1.70 carats; mounted in 18k yellow and white gold; size 5 3/4

**\$6,000 - 10,000**

Diamonds untested for origin of color.





66

66<sup>Y</sup>

**A PAIR OF CORAL AND DIAMOND EARCLIPS**

each centering a polished oval-shaped angel skin coral cabochon, to a double halo of millegrain-set round brilliant-cut diamonds; *estimated total diamond weight: 6.60 carats; mounted in 18k gold; length: 1 3/16 in.*

**\$5,000 - 8,000**



67

**PROPERTY FROM A LOS ALTOS HILLS,  
CALIFORNIA COLLECTOR**

67

**A FANCY COLORED DIAMOND AND DIAMOND RING**

centering a rectangular-shaped, modified brilliant-cut Fancy Yellow diamond, weighing 9.06 carats, flanked by a pair of triangular-shaped diamonds; *estimated remaining diamond weight: 1.20 carats; mounted in 18k gold and platinum; size 4 3/4*

**\$70,000 - 100,000**

Accompanied by GIA report # 2205724974, dated November 11, 2019, stating the 9.06 carat diamond as: Fancy Yellow color, SI1 clarity.



68



69

68

**AN ATTRACTIVE SAPPHIRE AND ENAMEL RING, CARTIER, FRANCE, CIRCA 1940**

of raised design, the cushion-shaped yellow sapphire, weighing approximately 26.60 carats, framed with black enamel; *signed JC for Jacques Cartier, no. 46977, with French assay marks; mounted in 18k gold; size: 4 1/2*

**\$35,000 - 55,000**

Accompanied by GIA report # 2203708345, dated November 1, 2019, stating the sapphire as: Natural, with no indications of heating.

69

**A PAIR OF RUBY, EMERALD AND DIAMOND 'TANJORE' EARRINGS, CARTIER, FRANCE, CIRCA 1980**

each of openwork hoop design, set with circular-shaped rubies and emeralds within a border of round brilliant-cut diamonds; *signed Cartier, no. 651205, with Pierre Brun maker's mark and French assay marks; estimated total diamond weight: 5.10 carats; mounted in platinum; length: 1 15/16 in.*

**\$4,000 - 7,000**



70



71



72

70

**AN 18K GOLD LEOPARD CUFF,  
DAVID WEBB**

the leopard created in gold repoussé drapes over the hinged cuff, its eyes set with round brilliant-cut diamonds; signed Webb, no. JA60; gross weight approximately: 112.95 grams; circumference: 6 in.

**\$10,000 - 12,000**

71

**A RUBY BRACELET,  
BOUCEHRON, FRANCE**

designed as an articulate line of square-cut rubies, weighing approximately 13.50 carats; signed Boucheron, no. 4354, with French maker's mark and assay mark; mounted in 18k gold; length: 6 1/2 in.

**\$5,000 - 8,000**

72 □

**A FANCY COLORED SAPPHIRE  
AND DIAMOND RING, FRANCE**

centering a cushion-shaped mixed-cut Padparadscha sapphire, weighing 3.50 carats, flanked by baguette-cut diamonds; with French maker's mark and assay mark; mounted in platinum; size 8 3/4

**\$15,000 - 25,000**

Accompanied by a photocopy of GRS report # 2018-019658, dated January 26, 2018, stating the sapphire as: Natural Padparadscha, no indications of thermal treatment.

Offered without reserve.





73



75



74

73

**AN 18K GOLD AND DIAMOND RING, CARTIER**

the domed center pavé-set with round brilliant-cut diamonds, the border and band of textured gold design; *signed Cartier, no. 4281; accompanied by signed box; estimated total diamond weight: 2.15 carats; size 8 1/2*

**\$4,000 - 6,000**

74

**AN 18K GOLD, DIAMOND AND RUBY PENDANT 'BARQUEROLLES' BROOCH, VAN CLEEF & ARPELS**

designed as a lion's head, set throughout with round brilliant-cut diamonds with two marquise-shaped ruby eyes, suspending a diamond-set hoop; *signed VCA; with pendant bail; estimated total diamond weight: 8.65 carats; mounted in 18k gold; length: 2 in.*

**\$30,000 - 50,000**

**PROPERTY OF A LADY**

75

**AN 18K GOLD, STEEL, AND GEM-SET BANGLE BRACELET, BULGARI, ITALY**

of stacked design, the steel tubogas pipes with gold inlay set with pink tourmaline, peridot, and amethyst cabochons, with snap-on back and yellow gold terminals; *signed Bulgari, with Italian registry marks; gross weight approximately: 106.65 grams; mounted in 18k gold and steel; circumference: 6 in. (adjustable)*

**\$4,000 - 6,000**



76



77



78

**PROPERTY OF AN INTERNATIONAL COLLECTOR**

76  
**A PAIR OF GOLD AND SAPPHIRE EARRINGS, CHAUMET, FRANCE**  
 each designed as a cluster of oval and circular-shaped blue, pink, yellow and green sapphires to a gold frame; *signed Chaumet, with French assay marks; accompanied by signed pouch; gross weight approximately: 21.80 grams; mounted in 18k gold; length: 7/8 in.*

**\$3,000 - 5,000**

77  
**A RETRO DIAMOND, RUBY AND BI-COLORED 18K GOLD BRACELET, CIRCA 1945**  
 composed of eight yellow and pink gold scroll links, each enhanced by round brilliant-cut diamonds and baguette-cut rubies, the center gold panel designed as a bow and accented with a row of round brilliant-cut diamonds; *estimated total diamond weight: 5.20 carats; mounted in 18k yellow and pink gold; length: 7 1/2 in.*

**\$9,000 - 12,000**

78  
**A RUBY AND DIAMOND FLOWER BROOCH, FRANCE**  
 with invisibly-set ruby petals and round brilliant-cut diamond pistils, extending to a callibré-cut ruby stem with further ruby and diamond leaves; *with French maker's mark and assay marks; estimated total diamond weight: 2.40 carats; mounted in platinum; length: 2 in.*

**\$6,000 - 10,000**

Accompanied by GIA report # 5202419327, dated July 3, 2019, stating the five randomly selected rubies as: Thai origin, no indications of heating.



80



79

**PROPERTY FROM A FLORIDA COLLECTOR**

79

**A RUBY, DIAMOND AND ENAMEL BROOCH, MARCUS & CO., CIRCA 1900**

of elongated form, bezel-set with two oval and one cushion-shaped ruby, to a surround of millegrain-set old European-cut diamonds, highlighted at each end by a pear-shaped diamond, within a black enamel border; *signed Marcus & Co; estimated total diamond weight: 1.35 carats; mounted in 14k gold; length: 1 15/16 in.*

**\$3,000 - 5,000**

80

**A 14K GOLD CIGARETTE CASE, CARTIER, CIRCA 1945**

designed as an envelope, measuring approximately 3 1/4 x 5 1/4 x 7/16 in.; *signed Cartier; gross weight approximately: 171.15 grams*

**\$6,000 - 9,000**



81



82



83

81  
**A PINK SAPPHIRE AND DIAMOND RING, TIFFANY & CO.**

centering a modified cut-cornered emerald-cut pink sapphire, weighing approximately 2.56 carats, flanked by trapezoid-cut diamonds, all within a round brilliant-cut diamond surround to diamond-set shoulders; *signed Tiffany & Co.; estimated total diamond weight: 1.12 carats; mounted in platinum; size 6*

**\$6,000 - 10,000**

82  
**A SAPPHIRE AND DIAMOND RING**

set with an oval-shaped mixed-cut sapphire, weighing 4.05 carats, within a round brilliant-cut diamond frame; *estimated total diamond weight: 2.00 carats; mounted in platinum; size 6*

**\$25,000 - 35,000**

Accompanied by AGL report # CS68134, dated June 11, 2015, stating the sapphire as: Burma (Myanmar) origin, no indications of heat or clarity enhancement.

83  
**A PAIR OF PLATINUM AND DIAMOND EARRINGS, CARTIER, FRANCE**

of hoop design, pavé-set with round brilliant-cut diamonds, with post fittings; *signed Cartier, no. 633567, with French assay marks; estimated total diamond weight: 4.95 carats; mounted in platinum; length: 1 in.*

**\$18,000 - 25,000**



84

84

**A FINE SAPPHIRE AND DIAMOND RING, FRANCE**

centering a cushion-shaped mixed-cut sapphire, weighing 10.16 carats, encircled in a halo of round brilliant-cut diamonds, further enhanced with ribbons of baguette-cut diamonds; *with French assay marks; estimated total diamond weight: 3.50 carats; mounted in platinum; size 7 1/4*

**\$90,000 - 140,000**

Accompanied by GIA report # 2205473718, dated July 25, 2019, stating the sapphire as: Burma (Myanmar) origin, with no indications of heating.

Accompanied by GRS report # 2019-087021, dated August 12, 2019, stating the sapphire as: Burma (Myanmar) origin, with no indications of thermal treatment.



85

85

**AN ATTRACTIVE PAIR OF RUBY AND DIAMOND EARRINGS**

each set with a round cabochon-cut ruby, weighing 4.10 and 3.94 carats, framed and surmounted by bezel-set round brilliant-cut diamonds; *estimated total diamond weight: 5.40 carats; mounted in platinum; length: 1 1/4 in.*

**\$35,000 - 55,000**

Accompanied by AGL report # 1103377 A and B, dated September 3, 2019, stating the rubies as: Burma (Myanmar) origin, no indications of heat enhancement.

## Property from a New York Collection

Lots 86 - 87



86

86

### **A PAIR OF RUBY AND DIAMOND EARCLIPS**

of cluster design, set with circular-shaped rubies and round brilliant-cut diamonds; *with collapsible post fittings; estimated total diamond weight: 6.40 carats; mounted in 18k yellow and white gold; length: 1 in.*

**\$4,000 - 6,000**

Accompanied by GIA report # 6204708397, dated November 7, 2019, stating the two randomly selected rubies as: Burma (Myanmar) origin, with indications of heating (minor residues).



87

87

### **A RUBY AND DIAMOND BROOCH**

designed as a stylized shell, set with old mine and baguette-cut diamonds, to the half-moon and triangular-cut diamond detail, accented by a row of circular-shaped rubies; *with maker's mark and French assay marks; estimated total diamond weight: 3.30 carats; mounted in 18k white gold; length: 1 1/2 in.*

**\$10,000 - 15,000**

Accompanied by GIA report # 5201708363, dated November 4, 2019, stating the two randomly selected rubies as: Burma (Myanmar) origin, no indications of heating.





88



89



90

**PROPERTY FROM A FLORIDA COLLECTOR**

88

**A DIAMOND RING**

centering an emerald-cut diamond, weighing 5.85 carats, flanked by tapered baguette-cut diamonds; *mounted in 18k gold; size 6 1/4*

**\$25,000 - 45,000**

Accompanied by GIA report # 5202703753, dated November 5, 2019, stating the diamond as: L color, VS1 clarity.

89

**A DIAMOND BRACELET**

of flexible openwork design, the links set with baguette and round brilliant-cut diamonds, enhanced with square-shaped diamonds; *with maker's mark and French import marks; estimated total diamond weight: 5.80 carats; mounted in platinum; length: 6 7/8 in.*

**\$10,000 - 15,000**

90

**A DIAMOND AND GEM-SET RING**

of openwork bombé form, decorated with carved cabochon ruby, sapphire and emerald leaves to branches adorned with round brilliant-cut diamonds; *signed David Webb; estimated total diamond weight: 2.10 carats; mounted in platinum and 14k white gold; size 9*

**\$4,000 - 6,000**



91



92

91

**A VERY FINE FANCY COLORED DIAMOND AND DIAMOND RING**

of bypass design, set with a pear-shaped modified brilliant-cut Fancy Pink-Purple diamond, weighing 2.46 carats, and a pear-shaped modified brilliant-cut diamond, weighing 2.01 carats; mounted in 18k white gold; size 6 3/4

**\$350,000 - 550,000**

Accompanied by a photocopy of GIA report # 6177519321, dated May 18, 2016, stating the 2.46 carat diamond as: Fancy Pink-Purple color, S11 clarity.

Accompanied by a photocopy of GIA report # 17426338, dated June 17, 2008, stating the 2.01 carat diamond as: D color, IF clarity.

92

**AN IMPRESSIVE PAIR OF DIAMOND EARRINGS, CARTIER**

each suspending pendants featuring three pear-shaped brilliant-cut diamonds, weighing from 1.43 to 2.55 carats, surmounted by a pair of round brilliant-cut diamonds; signed Cartier, no. 864421; estimated total diamond weight: 13.59 carats; mounted in platinum; length: 1 1/4 in.

**\$75,000 - 95,000**

Accompanied by GIA report # 6204067162, dated February 15, 2019, stating the 2.55 carat pear-shaped brilliant-cut diamond as: E color, VVS2 clarity.

Accompanied by GIA report # 2201067166, dated February 19, 2019, stating the 2.03 carat pear-shaped brilliant-cut diamond as: D color, VVS2 clarity.

Accompanied by GIA report # 2201067152, dated February 15, 2019, stating the 1.55 carat pear-shaped brilliant-cut diamond as: D color, VVS2 clarity.

Accompanied by GIA report # 5201067154, dated February 15, 2019, stating the 1.52 carat pear-shaped brilliant-cut diamond as: E color, VVS1 clarity.

Accompanied by GIA report # 1206066778, dated February 20, 2019, stating the 1.51 carat pear-shaped brilliant-cut diamond as: D color, VVS1 clarity.

Accompanied by GIA report # 2205067157, dated February 20, 2019, stating the 1.43 carat pear-shaped brilliant-cut diamond as: D color, VS1 clarity.

Accompanied by GIA report # 2205065325, dated February 15, 2019, stating the 1.00 carat round brilliant-cut diamond as: E color, VS1 clarity.

Accompanied by GIA report # 5202065078, dated February 19, 2019, stating the 1.00 carat round brilliant-cut diamond as: D color, VVS1 clarity.





# Property from the Estate of Joan Z. Steinbrenner

Lots 93 - 101



George and Joan Steinbrenner  
Private collection / All rights reserved

Joan Steinbrenner, born Elizabeth Joan (pronounced Jo-ann) Zieg, on August 25, 1935, in Mount Vernon, Ohio, was an American philanthropist, vice-chairwoman of the Yankees, and the wife of George Steinbrenner, the man who built the Yankees into the powerhouse we know it to be today. George's tumultuous, yet hugely successful tenure as the Yankees principal owner and chairman from the day he assumed control in 1973 to his passing in 2010, earned him the moniker of "the Boss" in his honorary city of New York. Joan, in her own right, was his counterpart and companion in life and within their community.

Mrs. Steinbrenner participated in many community projects and supported numerous philanthropic organizations over the years. In her native Ohio, she worked with the Cleveland Orchestra and was deeply involved with the Lake Erie Nature & Science Center. In Florida, she was named State Chairperson for the Florida Special Olympics in 1981 and 1982, and at various times sat on the boards of the National Society to Prevent Blindness, the Children's Home, Inc., the St. Joseph's Hospital Foundation and the Florida Orchestra.

A graduate of Upper Arlington High School in Columbus, Ohio, and Ohio State University, Mrs. Steinbrenner earned a degree in dental hygiene. She met George while he was undertaking his postgraduate studies at Ohio State. They married in 1956. In 1973, Mr. Steinbrenner led a group that purchased the Yankees. Brusque and tempestuous, often sparring with managers and players, he put a formidable stamp on the team as it won eleven pennants and seven World Series championships. In 2019, Forbes estimated the team's worth at \$4.6 billion, making it the most valuable franchise in baseball – its local revenue totaling more than the bottom six teams combined.

Bonhams is proud to offer a selection of bold, sophisticated and timeless jewelry from the Estate of Joan Z. Steinbrenner, whose elegance and grace lives on in her legacy of good works and her family's unwavering dedication to baseball, America's pastime.







## Property from the Estate of Joan Z. Steinbrenner

Lots 93 - 101



93

93

### **A GOLD AND DIAMOND 'PANTHÈRE' WRISTWATCH, CARTIER**

the square cream dial with painted black Roman numerals, secret signature at ten o'clock and blue steel hands, with round brilliant-cut diamond bezel and lugs extending to an integral gold brick link bracelet and deployant buckle, quartz movement; *dial, caseback and deployant buckle signed Cartier, caseback nos. 294451CE and 2702, with maker's mark and Swiss assay marks; accompanied by additional links; estimated total diamond weight: 1.85 carats; circumference: 5 1/2 in.*

**\$2,000 - 3,000**



94

94

### **A GOLD AND DIAMOND 'PANTHÈRE' WRISTWATCH, CARTIER**

the square cream dial with painted black Roman numerals, secret signature at ten o'clock and blue steel hands, with tiered single-cut diamond bezel and lugs extending to an integral gold brick link bracelet and deployant buckle, quartz movement; *dial, caseback and deployant buckle signed Cartier, with maker's mark and Swiss assay marks; mounted in 18k gold; circumference: 5 1/2 in.*

**\$2,000 - 3,000**





95

95

**A GOLD AND DIAMOND WRISTWATCH, PIAGET, CIRCA 1965**

the oval golden dial with golden hands, to round brilliant-cut diamond bezel and integral gold bark-finish tapered bracelet, quartz movement; dial signed Piaget, caseback nos. 4330 A6, 273806, with Swiss assay marks; estimated total diamond weight: 1.90 carats; mounted in 18k gold; circumference: 6 in.

**\$1,500 - 2,000**



96

96

**A SAPPHIRE, LAPIS LAZULI AND DIAMOND RING**

bezel-set with a backed cushion-cut sapphire within a round brilliant-cut diamond surround to the lapis lazuli gallery; gross weight approximately; 28.50 grams; mounted in 18k white gold; size: 4 1/2

**\$3,000 - 5,000**

## Property from the Estate of Joan Z. Steinbrenner

Lots 93 - 101



97

**AN 18K GOLD 'TORQUE' DEMI-PARURE,  
FRANK GEHRY FOR TIFFANY & CO.**

of sculptural design, the necklace and bracelet composed of interlocking twisted squares in various sizes; *signed Tiffany & Co. Gehry; accompanied by a signed pouch; gross weight approximately: 184.20 grams; mounted in 18k gold; length of necklace: 19 1/2 in.; length of bracelet: 8 1/2 in.*

**\$3,000 - 5,000**





# Property from the Estate of Joan Z. Steinbrenner

Lots 93 - 101



98



99

98

## **A PAIR OF DIAMOND EARRINGS**

designed as pavé-set diamond door knockers; *estimated total diamond weight: 12.00 carats; mounted in 18k gold; length: 1 1/2 in.*

**\$2,500 - 4,500**

99

## **A COLORED DIAMOND AND DIAMOND BRACELET**

designed as a series of eight flower heads, each with a central cushion-cut colored diamond to round brilliant-cut diamond surround, to the diamond-set buckle-link spacers; *estimated total diamond weight: 11.20 carats; mounted in 18k gold; length: 6 3/4 in.*

**\$5,000 - 8,000**

Colored diamonds untested for origin of color.



100

**AN 18K GOLD, CULTURED PEARL AND DIAMOND NECKLACE,  
HENRY DUNAY, TOGETHER WITH A RING**

the necklace composed of hammered gold links, the front set with three button-shaped cultured pearls, measuring approximately from 14.70 to 15.85 mm, surrounded and accented with pavé-set round brilliant-cut diamonds; and a ring of similar design; *necklace signed Dunay; accompanied by an additional matching earclip (not illustrated), and pouch for necklace; estimated total diamond weight: 7.20 carats; mounted in 18k gold; length of necklace: 14 1/2 in.; ring size 4 3/4*

**\$6,000 - 10,000**

Property from the Estate of Joan Z. Steinbrenner

Lots 93 - 101



101

**AN 18K GOLD AND DIAMOND 'TRIKA' BRACELET, BULGARI,  
TOGETHER WITH A PAIR OF EARCLIPS**

designed as a series of gold links, the panels pavé-set with round brilliant-cut diamonds with gold stitch-work detail; the earclips of similar design; *bracelet signed Bulgari, with Italian registry marks; estimated total diamond weight: 12.90 carats; mounted in 18k gold; length of bracelet: 6 3/8 in.; length of earclips: 1 1/4 in.*

**\$15,000 - 20,000**







102

**AN IMPORTANT PAIR OF FANCY COLORED DIAMOND  
AND DIAMOND EARRINGS**

suspending a marquis-shaped brilliant-cut Fancy Intense Blue diamond, weighing 1.81 carats, and an oval-shaped modified brilliant-cut Fancy Blue diamond, weighing 1.62 carats, surmounted by two cushion-shaped modified brilliant-cut diamonds, weighing 2.24 and 2.28 carats, enhanced by calibr , marquis and round brilliant-cut diamonds; *estimated remaining diamond weight: 2.60 carats; mounted in platinum; length: 1 1/2 in.*

**\$850,000 - 1,250,000**

Accompanied by GIA report # 5111789083, dated March 22, 2010, stating the 1.81 carat diamond as: Fancy Intense Blue color, VS1 clarity.

Accompanied by GIA report # 5191234527, dated September 05, 2018, stating the 1.62 carat diamond as: Fancy Blue color, VVS2 clarity.

Accompanied by GIA report # 1162103952, dated April 28, 2014, stating the 2.24 carat diamond as: G color, VS1 clarity.

Accompanied by GIA report # 2165089415, dated April 29, 2014, stating the 2.28 carat diamond as: G color, VS1 clarity.





# Property from the Collection of Mrs. H. C. Price

Lots 103 - 105



103



104



105

103  
**A PAIR OF TURQUOISE AND DIAMOND EARCLIPS, CARTIER, FRANCE**  
of stylized scroll design, enhanced with round brilliant-cut diamonds and oval turquoise cabochons; *one earclip signed Cartier, no. 02458, with maker's mark and French assay marks; accompanied by signed pouch; mounted in 18k gold and platinum; length: 1 1/8 in.*

**\$2,000 - 3,000**

104  
**A TURQUOISE AND DIAMOND BRACELET, CARTIER, FRANCE**  
the geometric openwork band set in the center with a row of round turquoise cabochons, flanked with alternating reeded gold and round brilliant-cut diamond-set triangular panels; *signed Cartier Paris, no. 08626 (indistinct), with maker's mark and French assay marks; accompanied by signed pouch; estimated total diamond weight: 5.40 carats; mounted in 18k gold; length: 7 in.*

**\$5,000 - 8,000**

105  
**A TURQUOISE AND DIAMOND RING, FRANCE**  
centering a round turquoise cabochon, the stylized foliate mounting set with radiating gold batons, round brilliant-cut diamonds and further turquoise cabochon accents; *signed France, with maker's mark; estimated total diamond weight: 1.20 carats; mounted in 18k gold; size 8*

**\$1,800 - 2,500**

By family tradition, this ring was purchased at Cartier with lots 103 and 104.









106

**AN ATTRACTIVE CITRINE AND DIAMOND DEMI-PARURE,  
VAN CLEEF & ARPELS, FRANCE, CIRCA 1970**

comprising a necklace with a detachable pendant-brooch designed as a lion's head, the mane set with navette-shaped cabochon citrines to braided gold settings, the face accented by round brilliant-cut diamonds, suspended from a braided gold chain with cabochon citrine detail; and pair of earclips of floral design centering a round brilliant-cut diamond; signed VCA, nos. B1984Y9, 4049Y9 and B3067Y3, with Mathon Paris maker's mark and French assay marks; estimated total diamond weight: 1.70 carats; mounted in 18k gold; length of necklace: 27 3/4 in.; length of brooch: 3 in.; length of earclips: 1 1/4 in.

**\$6,000 - 8,000**







107

**A FINE UNMOUNTED FANCY COLORED DIAMOND**

a cut-cornered rectangular modified brilliant-cut Fancy Vivid Yellow diamond weighing 10.88 carats

**\$275,000 - 475,000**

Accompanied by GIA report # 2205356156, dated June 11, 2019, stating the diamond as: Fancy Vivid Yellow color, SI1 clarity.

**END OF SALE**





DIAMOND INDEX

Lot No.	Carat	Cut/Shape	Color	Clarity	Laboratory
7	3.02	Pear	Fancy Vivid Yellow	SI2	GIA
9	0.56	Pear	Fancy Intense Yellow	SI1	GIA
45	8.08	Cushion	Fancy Intense Yellow	VS2	GIA
46	3.05	Rectangular	Fancy Vivid Yellow	VS2	GIA
47	6.98	Pear	Fancy Yellow	SI1	GIA
67	9.06	Rectangular	Fancy Yellow	SI1	GIA
88	5.85	Emerald	L	VS1	GIA
91	2.01	Pear	D	IF	GIA
91	2.46	Pear	Fancy Pink-Purple	SI1	GIA
92	1.43	Pear	D	VS1	GIA
92	2.03	Pear	D	VVS2	GIA
92	1.51	Pear	D	VVS1	GIA
92	2.55	Pear	E	VVS2	GIA
92	1.52	Pear	E	VVS1	GIA
92	1.55	Pear	D	VVS2	GIA
92	1.00	Round	E	VS1	GIA
92	1.00	Round	D	VVS1	GIA
102	1.81	Marquise	Fancy Intense Blue	VS1	GIA
102	1.62	Oval	Fancy Blue	VVS2	GIA
102	2.24	Cushion	G	VS1	GIA
102	2.28	Cushion	G	VS1	GIA
107	10.88	Rectangular	Fancy Vivid Yellow	SI1	GIA

\* next to color - color based on our opinion

\* next to clarity - clarity based on our opinion

\* next to weight - approximate weight by measurement

This list is provided for your convenience based on the opinion of our gemologists.

It in no way represents a guarantee or warranty.

Bonhams is not responsible for any discrepancies between this information & other opinions.

RUBY INDEX

Lot No.	Carat/Dimensions	Cut/Shape	Origin	Treatment	Laboratory Report
28	3.54	Cushion	Winza (Tanzania)	None	GRS
78	2.85 x 2.50 x 1.77 mm to 3.05 x 2.90 x 1.95 mm	Various shapes	Thailand	None	GIA
85	4.10 and 3.94	Round	Burma (Myanmar)	None	AGL
86	0.40 and 0.45	Oval	Burma (Myanmar)	Heated (Minor Residues)	GIA
87	1.10 and 1.16	Oval	Burma (Myanmar)	None	GIA

SAPPHIRE INDEX

Lot No.	Carat/Dimensions	Cut/Shape	Origin	Treatment	Laboratory Report
26	12.57	Oval	Sri Lanka	None	GIA
40	6.07	Oval	N/A	None	GIA
42	10.70	Cushion	Ceylon (Sri Lanka)	None	AGL
43	10.26	Cushion	Sri Lanka	None	GIA
48	7.46	Cushion	Sri Lanka	None	GRS
53	18.65	Cushion	Sri Lanka	None	GIA
57	7.46	Oval	Ceylon (Sri Lanka)	None	Gübelin
60	16.98	Rectangular	Burma (Myanmar)	None	SSEF
61	10.89	Cushion	Ceylon (Sri Lanka)	None	AGL
68	26.60*	Cushion	N/A	None	GIA
72	3.50	Cushion	N/A	None	GRS
82	4.05	Oval	Burma (Myanmar)	None	AGL
84	10.16	Cushion	Burma (Myanmar)	None	GIA
84	10.16	Cushion	Burma (Myanmar)	None	GRS

CERTIFIED PEARL INDEX

Lot No.	Carat/Dimensions	Cut/Shape	Origin	Treatment	Laboratory Report
25	Semi-baroque	8.30 x 7.37 mm and 8.34 x 7.17 mm (depths not measurable)	Natural Saltwater	None	GIA
30	Oval	12.03 x 10.22 mm (lengths not measurable)	Natural Saltwater	None	GIA

CERTIFIED ALEXANDRITE INDEX

Lot No.	Carat/Dimensions	Cut/Shape	Origin	Treatment	Laboratory Report
56	8.61	Cushion	Ceylon (Sri Lanka)	None	AGL

# Bonhams

AUCTIONEERS SINCE 1793

## Global Jewelry Auctions 2020

---

### FEBURARY 4

California Jewels

### FEBURARY 5

Knightsbridge Jewels

### MARCH 10

California Jewels

### MARCH 11

Knightsbridge Jewels

### MARCH 15

Jewels and Jadeite Online Sale

### APRIL 7

California Jewels

### APRIL 21

New York Jewels

### APRIL 22

Knightsbridge Jewels

### APRIL 29

London Jewels



### INQUIRIES

#### New York

+1 212 461 6526

#### Los Angeles

+1 323 436 5424

#### Hong Kong

+852 2918 4321

#### New Bond Street, London

+44 20 7468 8278

#### Knightsbridge, London

+44 20 7393 3977

#### Edinburgh

+44 131 240 0915

[bonhams.com/jewelry](http://bonhams.com/jewelry)

### A PAIR OF FANCY COLORED DIAMOND AND DIAMOND EARRINGS

\$850,000 - 1,250,000

To be offered in New York Jewels

December 8, 2019



# Bonhams

AUCTIONEERS SINCE 1793



## London Jewels

London, New bond Street | 4 December 2019

### ENQUIRIES

+44 (0) 20 7468 8284  
emily.barber@bonhams.com  
[bonhams.com/jewellery](https://www.bonhams.com/jewellery)

**AN ART DECO AQUAMARINE  
AND DIAMOND NECKLACE,  
BY CARTIER, CIRCA 1940**

£ 100,000 - 150,000  
\$ 130,000 - 190,000

# Bonhams

AUCTIONEERS SINCE 1793



## California Jewels

Los Angeles, California | December 12, 2019

### VIEWING

7 - 11 December 2019  
12pm to 5pm

### INQUIRIES

+1 (323) 436 5426  
emily.waterfall@bonhams.com  
[bonhams.com/jewellery](https://www.bonhams.com/jewellery)

**AN 18K GOLD, DIAMOND  
AND COLORED STONE  
CHARM BANGLE**  
\$7,000 - 9,000

# Conditions of sale

The following Conditions of Sale, as amended by any published or posted notices or verbal announcements during the sale, constitute the entire terms and conditions on which property listed in the catalog shall be offered for sale or sold by Bonhams & Butterfields Auctioneers Corp. and any consignor of such property for whom Bonhams acts as agent. By participating in this sale, you agree to be bound by these terms and conditions.

If live online bidding is available for the subject auction, additional terms and conditions of sale relating to online bidding will apply; see [www.bonhams.com/WebTerms](http://www.bonhams.com/WebTerms) for the supplemental terms. As used herein, "Bonhams," "we" and "us" refer to Bonhams & Butterfields Auctioneers Corp.

1. As used herein, the term "bid price" means the price at which a lot is successfully knocked down to the buyer. The term "purchase price" means the aggregate of (a) the bid price, (b) a PREMIUM retained by us and payable by the buyer (the "buyer's premium"), EQUAL TO 27.5% OF THE FIRST \$3,000 OF THE BID PRICE, 25% OF THE AMOUNT OF THE BID PRICE ABOVE \$3,000 UP TO AND INCLUDING \$400,000, 20% OF THE AMOUNT OF THE BID PRICE ABOVE \$400,000 UP TO AND INCLUDING \$4,000,000, AND 13.9% OF THE AMOUNT OF THE BID PRICE OVER \$4,000,000, and (c) unless the buyer is exempt by law from the payment thereof, any Alabama, Arizona, California, Colorado, Connecticut, Florida, Georgia, Hawaii, Idaho, Illinois, Iowa, Indiana, Kentucky, Louisiana, Maine, Massachusetts, Michigan, Minnesota, Nevada, New Jersey, New York, North Carolina, Ohio, Pennsylvania, Rhode Island, Texas, Utah, Virginia, Washington, D.C., Washington, Wisconsin, Wyoming or other state or local sales tax (or compensating use tax) and other applicable taxes. With regard to New York sales tax, please refer to the "Sales and Use Tax" section of these Conditions of Sale.

2. In order to bid at the sale, prospective bidders must submit to Bonhams a completed bidder registration form (appearing at the end of this catalog) and any other requested information or references. New bidders and bidders who have not recently updated their registration information must pre-register to bid at least two business days before the sale. Individuals will be required to provide government-issued proof of identity and proof of address. Entity clients will be required to provide documentation including confirmation of entity registration showing the registered name, confirmation of registered address, documentary proof of officers and beneficial owners, proof of authority to transact on behalf of the entity and government-issued proof of identity for the individual who is transacting on the entity's behalf.

We may also request a financial reference and /or deposit from bidders before approving the bidder registration. In the event a deposit is submitted and you are not the successful bidder, your deposit will be returned to you. If you are the successful bidder, any such deposit will be credited to offset the appropriate portion of the purchase price.

We reserve the right to request further information, including regarding the source of funds, in order to complete bidder identification and registration procedures (including completing any anti-money laundering and/or anti-terrorism financing checks we may require) to our satisfaction. If our bidder identification and registration procedures are not satisfied, we may, in our sole discretion, decline to register any bidder or reject any bid or cancel any sale to such bidder.

Every bidder shall be deemed to act as a principal unless prior to the commencement of the sale there is a written acceptance by Bonhams of a bidder registration form completed and signed by the principal which clearly states that the authorized bidding agent is acting on behalf of the named principal. Absent such written acceptance by Bonhams, any person placing a bid as agent on behalf of another (whether or not such person has disclosed that fact or the identity of the principal) may be jointly and severally liable with the principal under any contract resulting from the acceptance of a bid. Every bidder shall be responsible for

any use of its assigned paddle or bidding account, regardless of the circumstances.

3. You represent and warrant that: (i) you have provided us with true and correct copies of valid identification and proof of residence and, if applicable, financial and/or corporate documents; (ii) neither you, your principal (if applicable, and subject to Bonhams' prior written acceptance pursuant to paragraph 2 above), nor any individual or entity with a beneficial or ownership interest in either or in the purchase transaction is on the Specially Designated Nationals List maintained by the Office of Foreign Assets Control of the U.S. Department of the Treasury nor subject to any other sanctions or embargo program or regulation in effect in the United States, European Union, England and Wales, or other applicable jurisdictions; (iii) if you are acting as an agent for a principal, you have conducted appropriate due diligence into such principal, and agree that Bonhams shall be entitled to rely upon such due diligence, you will retain adequate records evidencing such due diligence for a period of five (5) years following the consummation of the sale, and will make these records available for inspection upon Bonhams' request; (vi) neither the purchase transaction (including your bidding activity) nor the purchase funds are connected with nor derive from any criminal activity, and they are not designed to nor have they or shall they, violate the banking, anti-money laundering, or currency transfer laws or other regulations (including without limitation, import-export laws) of any country or jurisdiction, or further any other unlawful purpose, including without limitation collusion, anti-competitive activity, tax evasion or tax fraud.

You acknowledge and agree that we may rely upon the accuracy and completeness of the foregoing warranties.

4. On the fall of the auctioneer's hammer, the highest bidder shall have purchased the offered lot in accordance and subject to compliance with all of the conditions set forth herein and (a) assumes full risk and responsibility therefor, (b) if requested will sign a confirmation of purchase, and (c) will pay the purchase price in full or such part as we may require for all lots purchased. No lot may be transferred.

Unless otherwise agreed, payment in good, cleared funds is due and payable within five (5) business days following the auction sale. Whenever the buyer pays only a part of the total purchase price for one or more lots purchased, we may apply such payments, in our sole discretion, to the lot or lots we choose. Payment will not be deemed made in full until we have received good, cleared funds for all amounts due. Title in any purchased property will not pass until full and final payment has been received by Bonhams. Accounts must be settled in full before property is released to the buyer. In the event property is released earlier, such release will not affect the passing of title or the buyer's obligation to timely remit full payment.

We reserve the right to refuse to accept payment from a source other than the registered bidder or buyer of record. Once an invoice is issued, we cannot change the buyer's name on an invoice.

Payment for purchases must be made in the currency in which the sale is conducted and may be made in or by (a) cash, up to the amount of US \$5,000 (whether by single or multiple related payments), or the equivalent in the currency in which the sale is conducted, (b) cashier's check or money order, (c) personal check with approved credit drawn on a U.S. bank, (d) wire transfer or other immediate bank transfer, or (e) Visa, MasterCard, American Express or Discover credit, charge or debit card, provided that the registered bidder or buyer's name is printed on the card. A processing fee will be assessed on any returned checks.

To the fullest extent permitted by applicable law, the buyer grants us a security interest in the property, and we may retain as collateral security for the buyer's obligations to us, any property and all monies held or received by us for the account of the buyer, in our possession. We also retain all rights of a secured party under the California Commercial

Code, and you agree that we may file financing statements without your signature. If the foregoing conditions or any other applicable conditions herein are not complied with, in addition to all other remedies available to us and the consignor by law, we may at our election: (a) hold the buyer liable for the full purchase price and any late charges, collection costs, attorneys' fees and costs, expenses and incidental damages incurred by us or the consignor arising out of the buyer's breach; (b) cancel the sale, retaining as liquidated damages all payments made by the buyer; and/or (c) cancel the sale and/or resell the purchased property, at public auction and/or by private sale, and in such event the buyer shall be liable for the payment of all consequential damages, including any deficiencies or monetary losses, and all costs and expenses of such sale or sales, our commissions at our standard rates, all other charges due hereunder, all late charges, collection costs, attorneys' fees and costs, expenses and incidental damages. In addition, where two or more amounts are owed in respect of different transactions by the buyer to us, to Bonhams 1793 Limited and/or to any of our other affiliates, subsidiaries or parent companies worldwide within the Bonhams Group, we reserve the right to apply any monies paid in respect of a transaction to discharge any amount owed by the buyer. If all fees, commissions, premiums, bid prices and other sums due to us from the buyer are not paid promptly as provided in these Conditions of Sale, we reserve the right to impose a finance charge equal to 1.5% per month (or, if lower, the maximum nonusurious rate of interest permitted by applicable law), on all amounts due to us beginning on the 31st day following the sale until payment is received, in addition to other remedies available to us by law.

5. We reserve the right to withdraw any property and to divide and combine lots at any time before such property's auction. Unless otherwise announced by the auctioneer at the time of sale, all bids are per lot as numbered in the catalog and no lots shall be divided or combined for sale.

6. We reserve the right to reject a bid from any bidder, to split any bidding increment, and to advance the bidding in any manner the auctioneer may decide. In the event of any dispute between bidders, or in the event the auctioneer doubts the validity of any bid, the auctioneer shall have sole and final discretion either to determine the successful bidder, re-open the bidding, or to cancel the sale and re-offer and resell the article in dispute. If any dispute arises after the sale, our sales records shall be conclusive in all respects.

We further reserve the right to cancel the sale of any property if (i) you are in breach of your representations and warranties as set forth in paragraph 3 above; (ii) we, in our sole discretion, determine that such transaction might be unlawful or might subject Bonhams or the consignor to any liability to any third party; or (iii) there are any other grounds for cancellation under these Conditions of Sale.

7. If we are prevented by fire, theft or any other reason whatsoever from delivering any property to the buyer or a sale otherwise cannot be completed, our liability shall be limited to the sum actually paid therefor by the buyer and shall in no event include any compensatory, incidental or consequential damages.

8. All lots in the catalog are offered subject to a reserve unless otherwise indicated in the catalog. The reserve is the confidential minimum bid price at which such lot will be sold and it does not to exceed the low estimate value for the lot. If a lot is offered subject to a reserve, we may implement such reserve by bidding on behalf of the consignor, whether by opening bidding or continuing bidding in response to other bidders until reaching the reserve. If we have an interest in an offered lot and the proceeds therefrom other than our commissions, we may bid up to the reserve to protect such interest. If the auctioneer determines that any opening or subsequent bid is below the reserve for a lot, (s)he may reject such opening bid and withdraw the item from sale. **CONSIGNORS ARE NOT ALLOWED TO BID ON THEIR OWN ITEMS.**

# Conditions of sale - continued

9. Other than as provided in the Limited Right of Rescission with respect to identification of authorship, all property is sold "AS IS" and any statements contained in the catalog or in any advertisement, bill of sale, announcement, condition report, invoice or elsewhere as to period, culture, source, origin, media, measurements, size, quality, rarity, provenance, importance, exhibition and literature of historical relevance, merchantability, fitness for a particular purpose, or physical condition ARE QUALIFIED STATEMENTS OF OPINION AND NOT REPRESENTATIONS, WARRANTIES, OR ASSUMPTION OF LIABILITY. Neither Bonhams nor the consignor shall be responsible for any error or omission in the catalog description of any property. No employee or agent of Bonhams is authorized to make on our behalf or on that of the consignor any representation or warranty, oral or written, with respect to any property.

10. All purchased property shall be removed from the premises at which the sale is conducted by the date(s) and time(s) set forth in the "Buyer's Guide" portion of this catalog. If not so removed, daily storage fees will be payable to us by the buyer as set forth therein. We reserve the right to transfer property not so removed to an offsite warehouse at the buyer's risk and expense, as set forth in more detail in the "Buyer's Guide." Packing and handling of purchased lots are the responsibility of the buyer and at the buyer's entire risk, as are the identification, application for, and cost(s) of obtaining of any necessary export, import, restricted material (e.g. endangered species) or other permit for such lots.

For an additional fee, Bonhams may provide packing and shipping services for certain items as noted in the "Buyer's Guide" section of the catalog.

11. The copyright in the text of the catalog and the photographs, digital images and illustrations of lots in the catalog belong to Bonhams or our licensors. You will not reproduce or permit anyone else to reproduce such text, photographs, digital images or illustrations without our prior written consent. Bonhams and the consignor make no representation or warranty as to whether the buyer acquires any copyrights on the purchase of an item of Property.

12. Bonhams may, in our discretion, as a courtesy and free of charge, execute bids on your behalf if so instructed by you, provided that neither Bonhams nor our employees or agents will be liable for any error or default (whether human or otherwise) in doing so or for failing to do so. Without limiting the foregoing, Bonhams (including our agents and employees) shall not be responsible for any problem relating to telephone, online, or other bids submitted remotely through any means, including without limitation, any telecommunications or internet fault or failure, or breakdown or problems with any devices or online platforms, including third-party online platforms, regardless of whether such issue arises with our, your, or such third-party's technology, equipment, or connection. By participating at auction by telephone or online, bidders expressly consent to the recording of their bidding sessions and related communications with Bonhams and our employees and agents, and acknowledge their acceptance of these Conditions of Sale as well as any additional terms and conditions applicable to any such bidding platform or technology.

13. These Conditions of Sale shall bind the successors and assigns of all bidders and buyers and inure to the benefit of our successors and assigns. No waiver, amendment or modification of the terms hereof (other than posted notices or oral announcements during the sale) shall bind us unless specifically stated in writing and signed by us. No act or omission of Bonhams, its employees or agents, nor any failure thereof to exercise any remedy hereunder, shall operate or be deemed to operate as a waiver of Bonhams' rights under these Conditions of Sale. If any part of these Conditions of Sale is for any reason invalid or unenforceable, the rest shall remain valid and enforceable.

14. These Conditions of Sale and the buyer's and our respective rights and obligations hereunder shall be governed

by and construed and enforced in accordance with the laws of the State of California. Any dispute, controversy or claim arising out of or relating to this agreement, or the breach, termination or validity thereof, brought by or against Bonhams (but not including claims brought against the consignor by the buyer of lots consigned hereunder) shall be resolved by the procedures set forth below.

15. You accept and agree that Bonhams will hold and process your personal information and may share and use it as required by law and as described in, and in line with Bonhams' Privacy Policy, available at website at [www.bonhams.com/legals/](http://www.bonhams.com/legals/). If you desire access, update, or restriction to the use of your personal information, please email [data.protection@bonhams.com](mailto:data.protection@bonhams.com).

## SALES AND USE TAX

New York sales tax is charged on the hammer price, buyer's premium and any other applicable charges on any property collected or delivered in New York State, regardless of the state or country in which the buyer resides or does business. Buyers who make direct arrangements for collection by a shipper who is considered a "private" or "contract" carrier by the New York Department of Taxation and Finance will be charged New York sales tax, regardless of the destination of the property. Property collected for delivery to a destination outside of New York by a shipper who is considered a "common carrier" by the New York Department of Taxation and Finance (e.g. United States Postal Service, United Parcel Service, and FedEx) is not subject to New York sales tax, but if it is delivered into any state in which Bonhams is registered or otherwise conducts business sufficient to establish a nexus, Bonhams may be required by law to collect and remit the appropriate sales tax in effect in such state. Property collected for delivery outside of the United States by a freight forwarder who is registered with the Transportation Security Administration ("TSA") is not subject to New York sales tax.

## MEDIATION AND ARBITRATION PROCEDURES

(a) Within 30 days of written notice that there is a dispute, the parties or their authorized and empowered representatives shall meet by telephone and/or in person to mediate their differences. If the parties agree, a mutually acceptable mediator shall be selected and the parties will equally share such mediator's fees. The mediator shall be a retired judge or an attorney familiar with commercial law and trained in or qualified by experience in handling mediations. Any communications made during the mediation process shall not be admissible in any subsequent arbitration, mediation or judicial proceeding. All proceedings and any resolutions thereof shall be confidential, and the terms governing arbitration set forth in paragraph (c) below shall govern.

(b) If mediation does not resolve all disputes between the parties, or in any event no longer than 60 days after receipt of the written notice of dispute referred to above, the parties shall submit the dispute for binding arbitration before a single neutral arbitrator. Such arbitrator shall be a retired judge or an attorney familiar with commercial law and trained in or qualified by experience in handling arbitrations. Such arbitrator shall make all appropriate disclosures required by law. The arbitrator shall be drawn from a panel of a national arbitration service agreed to by the parties, and shall be selected as follows: (i) If the national arbitration service has specific rules or procedures, those rules or procedures shall be followed; (ii) If the national arbitration service does not have rules or procedures for the selection of an arbitrator, the arbitrator shall be an individual jointly agreed to by the parties. If the parties cannot agree on a national arbitration service, the arbitration shall be conducted by the American Arbitration Association, and the arbitrator shall be selected in accordance with the Rules of the American Arbitration Association. The arbitrator's award shall be in writing and shall set forth findings of fact and legal conclusions.

(c) Unless otherwise agreed to by the parties or provided by the published rules of the national arbitration service:

(i) the arbitration shall occur within 60 days following the selection of the arbitrator;

(ii) the arbitration shall be conducted in the designated location, as follows: (A) in any case in which the subject auction by Bonhams took place or was scheduled to take place in the State of New York or Connecticut or the Commonwealth of Massachusetts, the arbitration shall take place in New York City, New York; (B) in all other cases, the arbitration shall take place in the city of San Francisco, California; and

(iii) discovery and the procedure for the arbitration shall be as follows:

(A) All arbitration proceedings shall be confidential;

(B) The parties shall submit written briefs to the arbitrator no later than 15 days before the arbitration commences;

(C) Discovery, if any, shall be limited as follows: (I) Requests for no more than 10 categories of documents, to be provided to the requesting party within 14 days of written request thereof; (II) No more than two (2) depositions per party, provided however, the deposition(s) are to be completed within one (1) day; (III) Compliance with the above shall be enforced by the arbitrator in accordance with California law;

(D) Each party shall have no longer than eight (8) hours to present its position. The entire hearing before the arbitrator shall not take longer than three (3) consecutive days;

(E) The award shall be made in writing no more than 30 days following the end of the proceeding. Judgment upon the award rendered by the arbitrator may be entered by any court having jurisdiction thereof.

To the fullest extent permitted by law, and except as required by applicable arbitration rules, each party shall bear its own attorneys' fees and costs in connection with the proceedings and shall share equally the fees and expenses of the arbitrator.

## LIMITED RIGHT OF RESCISSION

If within one (1) year from the date of sale, the original buyer (a) gives written notice to us alleging that the identification of Authorship (as defined below) of such lot as set forth in the **BOLD TYPE** heading of the catalog description of such lot (as amended by any saleroom notices or verbal announcements during the sale) is not substantially correct based on a fair reading of the catalog (including the terms of any glossary contained therein), and (b) within 10 days after such notice returns the lot to us in the same condition as at the time of sale, and (c) establishes the allegation in the notice to our satisfaction (including by providing one or more written opinions by recognized experts in the field, as we may reasonably require), then the sale of such lot will be rescinded and, unless we have already paid to the consignor monies owed him in connection with the sale, the original purchase price will be refunded.

If, prior to receiving such notice from the original buyer alleging such defect, we have paid the consignor monies owed him in connection with the sale, we shall pay the original buyer the amount of our commissions, any other sale proceeds to which we are entitled and applicable taxes received from the buyer on the sale and make demand on the consignor to pay the balance of the original purchase price to the original buyer. Should the consignor fail to pay such amount promptly, we may disclose the identity of the consignor and assign to the original buyer our rights against the consignor with respect to the lot the sale of which is sought to be rescinded. Upon such disclosure and assignment, any liability of Bonhams as consignor's agent with respect to said lot shall automatically terminate.

The foregoing limited right of rescission is available to the original buyer only and may not be assigned to or relied

# Conditions of sale - continued

upon by any subsequent transferee of the property sold. The buyer hereby accepts the benefit of the consignor's warranty of title and other representations and warranties made by the consignor for the buyer's benefit. Nothing in this section shall be construed as an admission by us of any representation of fact, express or implied, obligation or responsibility with respect to any lot. THE BUYER'S SOLE AND EXCLUSIVE REMEDY AGAINST BONHAMS FOR ANY REASON WHATSOEVER IS THE LIMITED RIGHT OF RESCISSION DESCRIBED IN THIS SECTION.

"Authorship" means only the identity of the creator, the period, culture and source or origin of the lot, as the case may be, as set forth in the **BOLD TYPE** heading of the print catalog entry. The right of rescission does not extend to: (a) works of art executed before 1870 (unless these works are determined to be counterfeits created since 1870), as this is a matter of current scholarly opinion which can change; (b) titles, descriptions, or other identification of offered lots, which information normally appears in lower case type below the **BOLD TYPE** heading identifying the Authorship; (c) Authorship of any lot where it was specifically mentioned that there exists a conflict of specialist or scholarly opinion regarding the Authorship of the lot at the time of sale; (d) Authorship of any lot which as of the date of sale was in accordance with the then generally-accepted opinion of scholars and specialists regarding the same; or (e) the identification of periods or dates of creation in catalog descriptions which may be proven inaccurate by means of scientific processes that are not generally accepted for use until after publication of the catalog in which the property is offered or that were unreasonably expensive or impractical to use at the time of such publication.

## LIMITATION OF LIABILITY

EXCEPT AS EXPRESSLY PROVIDED ABOVE, ALL PROPERTY IS SOLD "AS IS." NEITHER BONHAMS NOR THE CONSIGNOR MAKES ANY REPRESENTATION

OR WARRANTY, EXPRESS OR IMPLIED, AS TO THE MERCHANTABILITY, FITNESS OR CONDITION OF THE PROPERTY OR AS TO THE CORRECTNESS OF DESCRIPTION, GENUINENESS, ATTRIBUTION, PROVENANCE OR PERIOD OF THE PROPERTY OR AS TO WHETHER THE BUYER ACQUIRES ANY COPYRIGHTS OR OTHER INTELLECTUAL PROPERTY RIGHTS IN LOTS SOLD OR AS TO WHETHER A WORK OF ART IS SUBJECT TO THE ARTIST'S MORAL RIGHTS OR OTHER RESIDUAL RIGHTS OF THE ARTIST. THE BUYER EXPRESSLY ACKNOWLEDGES AND AGREES THAT IN NO EVENT SHALL BONHAMS BE LIABLE FOR ANY DAMAGES INCLUDING, WITHOUT LIMITATION, ANY COMPENSATORY, INCIDENTAL OR CONSEQUENTIAL DAMAGES. IN NO EVENT SHALL THE AGGREGATE LIABILITY OF BONHAMS AND ITS CONSIGNOR TO A PURCHASER EXCEED THE PURCHASE PRICE ACTUALLY PAID FOR A DISPUTED ITEM OF PROPERTY.

---

## Seller's guide

### SELLING AT AUCTION

Bonhams can help you every step of the way when you are ready to sell art, antiques and collectible items at auction. Our regional offices and representatives throughout the US are available to service all of your needs. Should you have any further questions, please visit our website at [www.bonhams.com/us](http://www.bonhams.com/us) for more information or call our Client Services Department at +1 (212) 644 9001.

### AUCTION ESTIMATES

The first step in the auction process is to determine the auction value of your property. Bonhams' world-renowned specialists will evaluate your special items at no charge and in complete confidence. You can obtain an auction estimate in many ways:

- Attend one of our Auction Evaluation Events held regularly at our galleries and in other major metropolitan areas. The updated schedule for Bonhams Auction Evaluation Events is available at [www.bonhams.com/us](http://www.bonhams.com/us).
- Call our Client Services Department to schedule a private appointment at one of our galleries. If you have a large collection, our specialists can travel, by appointment, to evaluate your property on site.
- Send clear photographs to us of each individual item, including item dimensions and other pertinent information with each picture. Photos should be sent to Bonhams' address in envelopes marked as "photo auction estimate". Alternatively, you can submit your request using our online form at [www.bonhams.com/us](http://www.bonhams.com/us). Digital images may be attached to the form. Please limit your images to no more than five (5) per item.

### CONSIGNING YOUR PROPERTY

After you receive an estimate, you may consign your property to us for sale in the next appropriate auction. Our staff assists you throughout the process, arranging transportation of your items to our galleries (at the consignor's expense), providing a detailed inventory of your consignment, and reporting the prices realized for each lot. We provide secure storage for your property in our warehouses and all items are insured throughout the auction process. You will receive payment for your property approximately 35 days after completion of sale.

Sales commissions vary with the potential auction value of the property and the particular auction in which the property is offered. Please call us for commission rates.

### PROFESSIONAL APPRAISAL SERVICES

Bonhams' specialists conduct insurance and fair market value appraisals for private collectors, corporations, museums, fiduciaries and government entities on a daily basis. Insurance appraisals, used for insurance purposes, reflect the cost of replacing property in today's retail market. Fair market value appraisals are used for estate, tax and family division purposes and reflect prices paid by a willing buyer to a willing seller.

When we conduct a private appraisal, our specialists will prepare a thorough inventory listing of all your appraised property by category. Valuations, complete descriptions and locations of items are included in the documentation.

Appraisal fees vary according to the nature of the collection, the amount of work involved, the travel distance, and whether the property is subsequently consigned for auction.

Our appraisers are available to help you anywhere and at any time. Please call our Client Services Department to schedule an appraisal.

### ESTATE SERVICES

Since 1865, Bonhams has been serving the needs of fiduciaries – lawyers, trust officers, accountants and executors – in the disposition of large and small estates. Our services are specially designed to aid in the efficient appraisal and disposition of fine art, antiques, jewelry, and collectibles. We offer a full range of estate services, ranging from flexible financial terms to tailored accounting for heirs and their agents to world-class marketing and sales support.

For more information or to obtain a detailed Trust and Estates package, please visit our website at [www.bonhams.com/us](http://www.bonhams.com/us) or contact our Client Services Department.



# Buyer's guide

## BIDDING & BUYING AT AUCTION

Whether you are an experienced bidder or an enthusiastic novice, auctions provide a stimulating atmosphere unlike any other. Bonhams previews and sales are free and open to the public. As you will find in these directions, bidding and buying at auction is easy and exciting. Should you have any further questions, please visit our website at [www.bonhams.com](http://www.bonhams.com) or call our Client Services Department at +1 (212) 644 9001.

## Catalogs

Before each auction we publish illustrated catalogs. Our catalogs provide descriptions and estimated values for each "lot." A lot may refer to a single item or to a group of items auctioned together. The catalogs also include the dates and the times for the previews and auctions. We offer our catalogs by subscription or by single copy. For information on subscribing to our catalogs, you may refer to the subscription form in this catalog, call our Client Services Department, or visit our website at [www.bonhams.com/us](http://www.bonhams.com/us).

## Previews

Auction previews are your chance to inspect each lot prior to the auction. We encourage you to look closely and examine each object on which you may want to bid so that you will know as much as possible about it. Except as expressly set forth in the Conditions of Sale, items are sold "as is" and with all faults; illustrations in our catalogs, website and other materials are provided for identification only. At the previews, our staff is always available to answer your questions and guide you through the auction process. Condition reports may be available upon request.

## Estimates

Bonhams catalogs include low and high value estimates for each lot, exclusive of the buyer's premium and tax. The estimates are provided as an approximate guide to current market value based primarily on previous auction results for comparable pieces, and should not be interpreted as a representation or prediction of actual selling prices. They are determined well in advance of a sale and are subject to revision. Please contact us should you have any questions about value estimates.

## Reserves

Unless indicated by the  $\emptyset$  symbol next to the lot number, which denotes no reserve, all lots in the catalog are subject to a reserve. The reserve is the minimum auction price that the consignor is willing to accept for a lot. This amount is confidential and does not exceed the low estimate value.

## Auction House's Interest in Property Offered at Auction

On occasion, Bonhams may offer property in which it has an ownership interest in whole or in part or otherwise has an economic interest. Such property, if any, is identified in the catalog with a  $\blacktriangle$  symbol next to the lot number(s).

Bonhams may also offer property for a consignor that has been guaranteed a minimum price for its property by Bonhams or jointly by Bonhams and a third party. Bonhams and any third parties providing a guarantee may benefit financially if the guaranteed property is sold successfully and may incur a financial loss if its sale is not successful. Such property, if any, is identified in the catalog with a  $\circ$  symbol next to the lot number(s).

## Bidding at Auction

At Bonhams, you can bid in many ways: in person, via absentee bid, over the phone, or via Bonhams' live online bidding facility. Absentee bids can be submitted in person, online, via fax or via email.

Valid Bonhams client accounts are required to participate in bidding activity. You can obtain registration information online, at the reception desk or by calling our Client Services Department.

By bidding at auction, whether in person or by agent, by absentee bid, telephone, online or other means, the buyer or bidder agrees to be bound by the Conditions of Sale.

Lots are auctioned in consecutive numerical order as they appear in the catalog. Bidding normally begins below the low estimate. The auctioneer will accept bids from interested

parties present in the saleroom, from telephone bidders, and from absentee bidders who have left written bids in advance of the sale. The auctioneer may also execute bids on behalf of the consignor by placing responsive or consecutive bids for a lot up to the amount of the reserve, but never above it.

We assume no responsibility for failure to execute bids for any reason whatsoever.

## In Person

If you are planning to bid at auction for the first time, you will need to register at the reception desk in order to receive a numbered bid card. To place a bid, hold up your card so that the auctioneer can clearly see it. Decide on the maximum auction price that you wish to pay, exclusive of buyer's premium and tax, and continue bidding until your bid prevails or you reach your limit. If you are the successful bidder on a lot, the auctioneer will acknowledge your paddle number and bid amount.

## Absentee Bids

As a service to those wishing to place bids, we may at our discretion accept bids without charge in advance of auction online or in writing on bidding forms available from us. "Buy" bids will not be accepted; all bids must state the highest bid price the bidder is willing to pay. Our auction staff will try to bid just as you would, with the goal of obtaining the item at the lowest bid price possible. In the event identical bids are submitted, the earliest bid submitted will take precedence. Absentee bids shall be executed in competition with other absentee bids, any applicable reserve, and bids from other auction participants. A friend or agent may place bids on your behalf, provided that we have received your written authorization prior to the sale. Absentee bid forms are available in our catalogs, online at [www.bonhams.com/us](http://www.bonhams.com/us), at offsite auction locations, and at our San Francisco, Los Angeles and New York galleries.

## By Telephone

Under special circumstances, we can arrange for you to bid by telephone. To arrange for a telephone bid, please contact our Client Services Department a minimum of 24 hours prior to the sale.

## Online

We offer live online bidding for most auctions and accept absentee bids online for all our auctions. Please visit [www.bonhams.com/us](http://www.bonhams.com/us) for details.

## Bid Increments

Bonhams generally uses the following increment multiples as bidding progresses:

\$50-200.....	by \$10s
\$200-500.....	by \$20/50/80s
\$500-1,000.....	by \$50s
\$1,000-2,000.....	by \$100s
\$2,000-5,000.....	by \$200/500/800s
\$5,000-10,000.....	by \$500s
\$10,000-20,000.....	by \$1,000s
\$20,000-50,000.....	by \$2,000/5,000/8,000s
\$50,000-100,000.....	by \$5,000s
\$100,000-200,000.....	by \$10,000s
above \$200,000.....	at auctioneer's discretion

**The auctioneer may split or reject any bid at any time at his or her discretion as outlined in the Conditions of Sale.**

## Currency Converter

Solely for the convenience of bidders, a currency converter may be provided at Bonhams' auctions. The rates quoted for conversion of other currencies to U.S. Dollars are indications only and should not be relied upon by a bidder, and neither Bonhams nor its agents shall be responsible for any errors or omissions in the operation or accuracy of the currency converter.

## Buyer's Premium

A buyer's premium is added to the winning bid price of each individual lot purchased, at the rates set forth in the Conditions of Sale. The winning bid price plus the premium constitute the purchase price for the lot. Applicable sales taxes are computed based on this figure, and the total becomes your final purchase price.

Unless specifically illustrated and noted, fine art frames are not included in the estimate or purchase price. Bonhams accepts no liability for damage or loss to frames during storage or shipment.

All sales are final and subject to the Conditions of Sale found in our catalogs, on our website, and available at the reception desk.

## Payment

All buyers are asked to pay and pick up by 3pm on the business day following the auction. Payment may be made to Bonhams by cash, checks drawn on a U.S. bank, money order, wire transfer, or by Visa, MasterCard, American Express or Discover credit or charge card or debit card. All items must be paid for within 5 business days of the sale. Please note that payment by personal or business check may result in property not being released until purchase funds clear our bank. For payments sent by mail, please remit to Cashier Department, 220 San Bruno Avenue, San Francisco, CA 94103.

## Sales Tax

Residents of states listed in Paragraph 1 of the Conditions of Sale must pay applicable sales tax. Other state or local taxes (or compensation use taxes) may apply. Sales tax will be automatically added to the invoice unless a valid resale number has been furnished or the property is shipped via common carrier to destinations outside the states listed in the Conditions of Sale. If you wish to use your resale license please contact Cashiers for our form.

## Shipping & Removal

Bonhams can accommodate shipping for certain items. Please contact our Cashiers Department for more information or to obtain a quote. Carriers are not permitted to deliver to PO boxes.

International buyers are responsible for all import/export customs duties and taxes. An invoice stating the actual purchase price will accompany all international purchases.

## Collection of Purchases

Please arrange for the packing and transport of your purchases prior to collection at our office. If you are sending a third party shipper, please request a release form from us and return it to +1 (212) 644 9009 prior to your scheduled pickup. To schedule collection of purchases, please call +1 (212) 461 6526.

## Auction Results

All you need is a touch-tone telephone and the lot number. Auction results are usually available on the next business day following the sale or online at [www.bonhams.com/us](http://www.bonhams.com/us).

# Important Names & Notices

## DIAMONDS, COLORED STONES & PEARLS

The Jewelry department of Bonhams & Butterfields recognizes that there are many various forms of treatments and enhancements used in diamonds and colored stones in order to improve their appearance and or color. Techniques such as heat treatment have been used to improve the color and transparency of both sapphires and rubies in addition to other gemstones. Techniques such as oiling have been used to enhance the clarity of emeralds while dying has been used to effect the color of jade. Techniques such as heat treatment, oiling, resin impregnation, irradiation, color diffusion, dying, fracture filling, and HTHP are just a few off the techniques that are in use today. Prospective buyers are therefore reminded that unless otherwise noted in our catalog description it must be assumed that some form of enhancement may have been used and that such treatment may not always be permanent or detectable and that our estimates have taken such possibilities into account. As a matter of policy, Bonhams & Butterfields endeavors to obtain certificates from recognized gemological laboratories when such certificates are deemed crucial to the authenticity of a gemstone. It is not possible however to gain certificates for all items offered for sale and it is therefore recommended where there is no mention of a certificate that all prospective buyers consult with one of our department specialists prior to purchase of such items.

PLEASE NOTE: A number of laboratories issue certificates that give more detailed descriptions of gemstones, however there may not be consensus between different laboratories on the degrees, or types of treatment for any particular gemstone. Neither is there necessarily consensus between different laboratories, or private appraisers, on the grading of diamonds. All gemstone weights are approximations only and although an independent laboratory grading may be used in the catalog text, we cannot guarantee such gradings.

Images shown may appear smaller or larger than actual size.

Although we endeavor to mention in our descriptions significant defects, needed repairs, absent stones and the like, **WE DO NOT GUARANTEE THAT THE DESCRIPTIONS ARE COMPREHENSIVE.** Please examine all lots carefully. It is the responsibility of the prospective bidder, or his agent, to determine the condition of lots during the preview. Condition reports have been created for most lots in this auction, and are available upon request. Please contact the Jewelry department at least two days prior to the sale date for additional information.

## REGULATED SPECIES MATERIALS AND CITES PERMITS

The export of a lot from the United States or import into certain countries may be subject to export or import regulations, licensure and/or other restrictions; in particular, lots containing plant or animal materials such as ivory, rhinoceros horn, tortoiseshell, coral, whalebone or certain types of woods, irrespective of age or value, may require the granting of one or more export or import licenses or certificates, or may be banned from import altogether by some countries. Moreover, the ability to obtain an export license or certificate does not insure the ability to obtain an import license or certificate in another country. Lots that contain such regulated species materials may also not be eligible for exportation or for re-importation into the United States if they are not at least 100 years of age, and, under current law, lots containing African Elephant Ivory may no longer be re-imported into the United States regardless of age. In addition, resales of lots containing certain regulated species materials may be subject to restrictions in some jurisdictions.

Lots noted in the catalog with a **Y** next to the lot number contain one or more such regulated plant or animal materials. **It is the buyer's responsibility to investigate any such restrictions and to obtain any relevant export or import licenses. Please note that this process is governed by local authorities and may take considerable time. Regardless of any delay in the obtaining of an export or import license or certificate or denial of a license's or certificate's issuance, purchased lots shall be paid for in accordance with the Conditions of Sale, and any such delay or denial shall not serve as the basis for cancellation of any sale.** Prospective buyers are advised to obtain information from the relevant regulatory authorities regarding export and import restrictions, requirements, and costs prior to bidding.

Prospective buyers should also check with their local (e.g. state) regulatory authorities regarding any local restrictions and/or permit requirements that may apply with respect to purchases of regulated species materials, including without limitation purchases of items containing elephant ivory or rhino horn. For example, we are advised that New York buyers of any lot containing elephant or mammoth ivory or rhino horn will be responsible for obtaining a New York State permit before taking possession of the lot within New York State, and that the State of New Jersey has banned the import of items containing elephant or marine mammal ivory or rhino horn into that state.

Upon request, Bonhams can refer the purchaser to a third party agent to assist the purchaser in attempting to obtain the appropriate licenses and/or certificates. However, there is no assurance that any necessary licenses or certificates can be obtained. Please contact the Specialist Department for a suggested list of shipping agents prior to placing a bid if you are uncertain as to whether a lot is subject to export/import license or certificate requirements or related restrictions.

## WATCHES

Although we endeavor to mention in our descriptions significant defects, needed repairs, absent stones and the like, **WE DO NOT GUARANTEE THAT THE DESCRIPTIONS ARE COMPREHENSIVE.** Please examine all watches carefully. It is the responsibility of the prospective bidder, or his agent, to determine the condition of watches during the preview. Except as expressly set forth in the Conditions of Sale, all watches are sold "as is". We do not guarantee the accuracy or operation of any watch function such as timekeeping, chronograph, calendar, repeater or register.

We make no judgments as to whether diamond dials or diamond bezels originated at the factory or are later additions.

# Bonhams Specialist Departments

---

## 19th Century Paintings

London  
Charles O' Brien  
+44 20 7468 8360  
New York  
Madalina Lazen  
+1 212 644 9108

## 20th Century British Art

London  
Matthew Bradbury  
+44 20 7468 8295

## 20th Century Fine Art

San Francisco  
Sonja Moro  
+1 415 694 9002

## Aboriginal Art

Australia  
Francesca Cavazzini  
+61 2 8412 2222

## African, Oceanic & Pre-Columbian Art

Los Angeles  
Fredric W. Backlar  
+1 323 436 5416 •

## American Paintings

New York  
Jennifer Jacobsen  
+1 917 206 1699

## Antiquities

London  
Francesca Hickin  
+44 20 7468 8226

## Antique Arms & Armour

London  
David Williams  
+44 20 7393 3807

## Art Collections, Estates & Valuations

London  
Harvey Cammell  
+44 (0) 20 7468 8340  
New York  
Sherri Cohen  
+1 917 206 1671  
Los Angeles  
Leslie Wright  
+1 323 436 5408  
Joseph Francaviglia  
+1 323 436 5443  
Lydia Ganley  
+1 323 436 4496  
San Francisco  
Victoria Richardson  
+1 415 503 3207  
Celeste Smith  
+1 415 503 3214

## Australian Art

Australia  
Merryn Schriever  
+61 2 8412 2222  
Alex Clark  
+61 3 8640 4088

## Australian Colonial Furniture and Australiana

+61 2 8412 2222

## Books, Maps & Manuscripts

London  
Matthew Haley  
+44 20 7393 3817  
New York  
Ian Ehling  
+1 212 644 9094  
Darren Sutherland  
+1 212 461 6531  
Los Angeles  
Catherine Williamson  
+1 323 436 5442  
San Francisco  
Adam Stackhouse  
+1 415 503 3266

## British & European Glass

London  
Fergus Gambon  
+44 20 7468 8245

## British Ceramics

London  
Fergus Gambon  
+44 20 7468 8245

## California & Western Paintings & Sculpture

Los Angeles  
Scot Levitt  
+1 323 436 5425  
Kathy Wong  
+1 323 436 5415  
San Francisco  
Aaron Bastian  
+1 415 503 3241

## Carpets

London  
Helena Gumley-Mason  
+44 20 8393 2615

## Chinese & Asian Art

London  
Asaph Hyman  
+44 20 7468 5888  
Rosangela Assennato  
+44 20 7393 3883  
Edinburgh  
Ian Glennie  
+44 131 240 2299  
New York  
Bruce MacLaren  
+1 917 206 1677  
Los Angeles  
Rachel Du  
+1 323 436 5587  
San Francisco  
Dessa Goddard  
+1 415 503 3333  
Hong Kong  
Xibo Wang  
+852 3607 0010  
Sydney  
Yvett Klein  
+61 2 8412 2231

## Chinese Paintings

Hong Kong  
Iris Miao  
+852 3607 0011

## Clocks

London  
James Stratton  
+44 20 7468 8364  
New York  
Jonathan Snellenburg  
+1 212 461 6530

## Coins & Medals

London  
John Millensted  
+44 20 7393 3914  
Los Angeles  
Paul Song  
+1 323 436 5455

## Entertainment Memorabilia

London  
Katherine Schofield  
+44 20 7393 3871  
Los Angeles  
Catherine Williamson  
+1 323 436 5442  
Dana Hawkes  
+1 978 283 1518

## European Ceramics

London  
Sebastian Kuhn  
+44 20 7468 8384

## European Paintings

London  
Charles O' Brien  
+44 20 7468 8360  
New York  
Madalina Lazen  
+1 212 644 9108  
Los Angeles  
Rocco Rich  
+1 323 436 5410

## European Sculptures & Works of Art

London  
Michael Lake  
+44 20 8963 6813

## Furniture and Decorative Art

London  
Thomas Moore  
+44 20 8963 2816  
Los Angeles  
Angela Past  
+1 323 436 5422  
Anna Hicks  
+1 323 436 5463  
San Francisco  
Jeffrey Smith  
+1 415 215 7385

## Greek Art

London  
Anastasia Orfanidou  
+44 20 7468 8356

## Golf Sporting

Memorabilia  
Edinburgh  
Kevin McGimpsey  
Hamish Wilson  
+44 131 240 0916

## Irish Art

London  
Penny Day  
+44 20 7468 8366

## Impressionist & Modern Art

London  
India Phillips  
+44 20 7468 8328  
New York  
Molly Ott Ambler  
+1 917 206 1627  
Los Angeles  
Kathy Wong  
+1 323 436 5415

## Indian, Himalayan & Southeast Asian Art

Hong Kong  
Edward Wilkinson  
+852 2918 4321  
New York  
Mark Rasmussen  
+1 917 206 1688

## Islamic & Indian Art

London  
Oliver White  
+44 20 7468 8303

## Japanese Art

London  
Suzannah Yip  
+44 20 7468 8368  
New York  
Jeff Olson  
+1 212 461 6516

## Jewellery

London  
Jean Ghika  
+44 20 7468 8282  
Emily Barber  
+44 20 7468 8284  
New York  
Brett O'Connor  
+1 212 461 6525  
Caroline Morrissey  
+1 212 644 9046  
Leslie Roskind  
+1 212 644 9035  
Los Angeles  
Emily Waterfall  
+1 323 436 5426  
San Francisco  
Shannon Beck  
+1 415 503 3306  
Hong Kong  
Anastasia Chao  
+852 3607 0007  
Ellen Sin  
+852 3607 0017

## Marine Art

London  
Veronique Scorer  
+44 20 7393 3962

**Mechanical Music**

London  
Jon Baddeley  
+44 20 7393 3872

**Modern & Contemporary  
African Art**

London  
Giles Peppiatt  
+ 44 20 7468 8355  
New York  
Hayley Grundy  
+1 917 206 1624

**Modern & Contemporary  
Middle Eastern Art**

London  
Nima Sagharchi  
+44 20 7468 8342

**Modern & Contemporary  
South Asian Art**

London  
Tahmina Ghaffar  
+44 207 468 8382

**Modern Decorative  
Art + Design**

London  
Mark Oliver  
+44 20 7393 3856  
New York  
Benjamin Walker  
+1 212 710 1306  
Dan Tolson  
+1 917 206 1611  
Los Angeles  
Jason Stein  
+1 323 436 5466

**Motor Cars**

London  
Tim Schofield  
+44 20 7468 5804  
New York  
Rupert Banner  
+1 212 461 6515  
Eric Minoff  
1 917 206 1630  
Evan Ide  
+1 917 340 4657  
Los Angeles  
Jakob Greisen  
+1 415 503 3284  
Michael Caimano  
+1 929 666 2243  
San Francisco  
Mark Osborne  
+1 415 503 3353  
Europe  
Philip Kantor  
+32 476 879 471

**Automobilia**

London  
Toby Wilson  
+44 20 8963 2842  
Adrian Pipiros  
+44 20 8963 2840

**Motorcycles**

London  
Ben Walker  
+44 20 8963 2819  
James Stensel  
+44 20 8963 2818  
Los Angeles  
Craig Mallery  
+1 323 436 5470

**Museum Services**

San Francisco  
Laura King Pfaff  
+1 415 503 3210

**Native American Art**

Los Angeles  
Ingmars Lindbergs  
+1 415 503 3393  
Kim Jarand  
+1 323 436 5430

**Natural History**

Los Angeles  
Claudia Florian  
+1 323 436 5437  
Thomas E. Lindgren  
+1 310 469 8567 •

**Old Master Pictures**

London  
Andrew Mckenzie  
+44 20 7468 8261

**Orientalist Art**

London  
Charles O'Brien  
+44 20 7468 8360

**Photography**

New York  
Laura Paterson  
+1 917 206 1653

**Post-War and  
Contemporary Art**

London  
Ralph Taylor  
+44 20 7447 7403  
Giacomo Balsamo  
+44 20 7468 5837  
New York  
Muys Sniijders  
+212 644 9020  
Jacqueline Towers-Perkins  
+1 212 644 9039  
Lisa De Simone  
+1 917 206 1607  
Los Angeles  
Sharon Squires  
+1 323 436 5404  
Laura Bjorstad  
+1 323 436 5446

**Prints and Multiples**

London  
Lucia Tro Santafe  
+44 20 7468 8262  
New York  
Deborah Ripley  
+1 212 644 9059  
Los Angeles  
Morisa Rosenberg  
+1 323 436 5435

**Russian Art**

London  
Daria Khristova  
+44 20 7468 8334  
New York  
Yelena Harbick  
+1 212 644 9136

**Scientific Instruments**

London  
Jon Baddeley  
+44 20 7393 3872  
New York  
Jonathan Snellenburg  
+1 212 461 6530

**Scottish Pictures**

Edinburgh  
Chris Brickley  
+44 131 240 2297

**Silver & Gold Boxes**

London  
Ellis Finch  
+44 20 7393 3973

**Sporting Guns**

London  
William Threlfall  
+44 20 7393 3815

**Space History**

San Francisco  
Adam Stackhouse  
+1 415 503 3266

**Travel Pictures**

London  
Veronique Scorer  
+44 20 7393 3962

**Watches &  
Wristwatches**

London  
Jonathan Darracott  
+44 20 7447 7412  
New York  
Jonathan Snellenburg  
+1 212 461 6530  
Hong Kong  
Tim Bourne  
+852 3607 0021

**Whisky**

Edinburgh  
Martin Green  
+44 131 225 2266  
Hong Kong  
Daniel Lam  
+852 2918 4321

**Wine**

London  
Richard Harvey  
+44 20 7468 5811  
San Francisco  
Christine Ballard  
+1 415 503 3221  
Hong Kong  
Daniel Lam  
+852 2918 4321

**Client Services Departments****U.S.A.**

**San Francisco**  
(415) 861 7500  
(415) 861 8951 fax  
Monday - Friday, 9am to 5pm

**Los Angeles**

(323) 850 7500  
(323) 850 6090 fax  
Monday - Friday, 9am to 5pm

**New York**

(212) 644 9001  
(212) 644 9009 fax  
Monday - Friday, 9am to 5pm

**Toll Free**

(800) 223 2854

**U.K.**

Monday to Friday 8.30 to 6.00  
+44 (0) 20 7447 7447

**Bids**

+44 (0) 20 7447 7447  
+44 (0) 20 7447 7401 fax  
To bid via the internet please visit  
bonhams.com

• Indicates independent contractor

# Bonhams Global Network

## International Salerooms

### London

101 New Bond Street  
London W1S 1SR  
+44 20 7447 7447  
+44 20 7447 7400 fax

### New York

580 Madison Avenue  
New York, NY 10022  
+1 (212) 644 9001  
+1 (212) 644 9007 fax

### Hong Kong

Suite 2001  
One Pacific Place  
88 Queensway  
Admiralty  
Hong Kong  
+852 2918 4321  
+852 2918 4320 fax

## Offices and Associated Companies

### Africa

#### Nigeria

Neil Coventry  
+234 (0) 8110 033 792  
+27 (0) 7611 20171  
neil.coventry@  
bonhams.com

#### South Africa - Johannesburg

Penny Culverwell  
+27 (0) 71 342 2670  
penny.culverwell@  
bonhams.com

### Australia

#### Sydney

97-99 Queen Street,  
Woollahra, NSW 2025  
Australia  
+61 (0) 2 8412 2222  
+61 (0) 2 9475 4110 fax  
info.aus@bonhams.com

#### Melbourne

1130 High St  
Armadale VIC 3143  
Australia  
+61 (0) 3 8640 4088  
+61 (0) 2 9475 4110 fax  
info.aus@bonhams.com

### Asia

#### Beijing

Vivian Zhang  
Unit S102A, Beijing  
Lufthansa Center,  
50 Liangmaqiao Road,  
Chaoyang District,  
Beijing 100125, China  
+86 (0) 10 8424 3188  
beijing@bonhams.com

### Singapore

Bernadette Rankine  
11th Floor, Wisma Atria  
435 Orchard Road  
Singapore 238877  
+65 (0) 6701 8038  
+65 (0) 6701 8001 fax  
bernadette.rankine@  
bonhams.com

### Taiwan

Bobbie Hu  
37th Floor,  
Taipei 101 Tower  
No. 7 Xinyi Road,  
Section 5  
Taipei, 100  
+886 2 8758 2898  
+886 2 8758 2897 fax  
taiwan@bonhams.com

### Europe

#### Austria

Thomas Kamm  
thomas.kamm@  
bonhams.com  
+49 900 89 2420 5812  
austria@bonhams.com

#### Belgium

Christine De Schaetzen  
christine.deschaetzen@  
bonhams.com  
Boulevard Saint  
Michel 101  
1040 Brussels  
+32 (0) 2 736 5076  
belgium@bonhams.com

#### France

Catherine Yaiche  
catherine.yaiche@  
bonhams.com  
4 rue de la Paix  
75002 Paris  
+33 (0) 1 42 61 10 10  
paris@bonhams.com

#### Germany - Cologne

Katharina Schmid  
katharina.schmid@  
bonhams.com  
+49 (0) 221 9865 3419  
+49 (0) 157 9234 6717  
cologne@bonhams.com

### Germany - Munich

Thomas Kamm  
thomas.kamm@  
bonhams.com  
Maximilianstrasse 52  
80538 Munich  
+49 (0) 89 2420 5812  
munich@bonhams.com

### Germany - Stuttgart

Katharina Schmid  
katharina.schmid@  
bonhams.com  
Neue Brücke 2  
New Bridge Offices  
70173 Stuttgart  
+49 (0) 711 2195 2640  
+49 (0) 157 9234 6717  
stuttgart@bonhams.com

### Greece

7 Neofytou Vamva  
Street  
Athens 10674  
+30 (0) 210 3636 404  
athens@bonhams.com

### Ireland

Kieran O'Boyle  
kieran.oboyle@  
bonhams.com  
31 Molesworth Street  
Dublin 2  
+353 (0) 1 602 0990  
ireland@bonhams.com

### Italy - Milan

Luca Curradi  
luca.curradi@  
bonhams.com  
Via Boccaccio 22  
20123 Milano  
+39 0 2 4953 9020  
milan@bonhams.com

### Italy - Rome

Emma Dalla Libera  
emma.dallalibera@  
bonhams.com  
Via Sicilia 50  
00187 Roma  
+39 06 485 900  
rome@bonhams.com

### The Netherlands

Koen Samson  
koen.samson@  
bonhams.com  
De Lairessestraat 154  
1075 HL Amsterdam  
+31 (0) 20 67 09 701  
amsterdam@  
bonhams.com

### Portugal

Filipa De Andrade  
filipa.deandrade@  
bonhams.com  
Rua Bartolomeu Dias  
no160. 1o  
Belem  
1400-031 Lisbon  
+351 218 293 291  
portugal@bonhams.com

### Spain - Barcelona & North

Teresa Ybarra  
teresa.ybarra@  
bonhams.com  
+34 930 156 686  
+34 680 347 606  
barcelona@  
bonhams.com

### Spain - Madrid

Johann Leibbrandt  
johann.leibbrandt@  
bonhams.com  
Núñez de Balboa  
no 4-1C  
28001 Madrid  
+34 915 78 17 27

### Switzerland - Geneva

Livie Gallone Moeller  
livie.gallonemoeller@  
bonhams.com  
Rue Etienne-Dumont 10  
1204 Geneva  
+41 22 300 3160  
geneva@bonhams.com

### Switzerland - Zurich

Andrea Bodmer  
andrea.bodmer@  
bonhams.com  
Dreikönigstrasse 31a  
8002 Zürich  
+41 44 281 9535  
zurich@bonhams.com

### North America

#### USA

Representatives:

#### Arizona

Terri Adrian-Hardy  
terri.hardy@  
bonhams.com  
+1 (602) 859 1843  
arizona@bonhams.com

#### California

Central Valley  
David Daniel  
david.daniel@  
bonhams.com  
+1 (916) 364 1645  
nevada@bonhams.com

#### California - Palm Springs

Brooke Sivo  
brooke.sivo@  
bonhams.com  
+1 (760) 350 4255  
palmsprings@  
bonhams.com

#### California - San Diego

Brooke Sivo  
brooke.sivo@  
bonhams.com  
+1 (760) 567 1744  
sandiego@  
bonhams.com

#### Colorado

Lance Vigil  
lance.vigil@  
bonhams.com  
+1 (720) 355 3737  
colorado@  
bonhams.com

#### Florida

April Matteini  
april.matteini@  
bonhams.com  
+1 (305) 978 2459  
Alexis Butler  
alexis.butler@  
bonhams.com  
+1 (305) 878 5366  
miami@bonhams.com

### Georgia

Mary Moore Bethea  
mary.bethea@  
bonhams.com  
+1 (404) 842 1500  
georgia@bonhams.com

### Illinois & Midwest

Natalie B. Waechter  
natalie.waechter@  
bonhams.com  
+1 (773) 267 3300  
Shawn Marsh  
shawn.marsh@  
bonhams.com  
+1 (773) 680 2881  
chicago@bonhams.com

### Massachusetts & New England

Amy Corcoran  
amy.corcoran@  
bonhams.com  
+1 (617) 742 0909  
boston@bonhams.com

### Nevada

David Daniel  
david.daniel@  
bonhams.com  
+1 (775) 831 0330  
nevada@bonhams.com

### New Mexico

Terri Adrian-Hardy  
terri.hardy@  
bonhams.com  
+1 (602) 859 1843  
newmexico@  
bonhams.com

### Oregon & Idaho

Sheryl Acheson  
sheryl.acheson@  
bonhams.com  
+1 (971) 727 7797  
oregon@bonhams.com

### Philadelphia - Pennsylvania

Caitlyn Pickens  
caitlyn.pickens@  
bonhams.com  
+1 (267) 792 3172  
philadelphia@  
bonhams.com



---

**London**

Montpelier Street London  
SW7 1HH  
+44 20 7393 3900  
+44 20 7393 3905 fax

**Edinburgh**

22 Queen Street  
Edinburgh  
EH2 1JX  
+44 131 225 2266  
+44 131 220 2547 fax

**Los Angeles**

7601 W. Sunset Boulevard  
Los Angeles  
CA 90046  
+1 (323) 850 7500  
+1 (323) 850 6090 fax

**Texas - Dallas**

Mary Holm  
mary.holm@  
bonhams.com  
+1 (214) 557 2716  
dallas@bonhams.com

**Texas - Houston**

Lindsay Davis  
lindsay.davis@  
bonhams.com  
+1 (713) 855 7452  
texas@bonhams.com

**Virginia**

Gertraud Hechl  
gertraud.hechl@  
bonhams.com  
+1 (202) 422 2733  
virginia@  
bonhams.com

**Washington  
& Alaska**

Heather O'Mahony  
heather.omahony@  
bonhams.com  
+1 (206) 566 3913  
seattle@  
bonhams.com

**Washington DC  
Mid-Atlantic Region**

Gertraud Hechl  
gertraud.hechl@  
bonhams.com  
+1 (202) 422 2733  
washingtonDC@  
bonhams.com

**Canada****Toronto, Ontario**

Kristin Kearney  
340 King St East  
2nd floor, Office 213  
Toronto ON  
M5A 1 KB  
kristin.kearney@  
bonhams.com  
+1 (416) 462 9004  
info.ca@  
bonhams.com

**Montreal, Quebec**

+1 (514) 209 2377  
info.ca@  
bonhams.com

**Middle East****Israel**

Joslyne Halibard  
joslyne.halibard@  
bonhams.com  
+972 (0) 54 553 5337

**United  
Kingdom****South East  
England****Guildford**

Millmead,  
Guildford,  
Surrey GU2 4BE  
+44 1483 504 030  
guildford@  
bonhams.com

**Isle of Wight**

+44 1273 220 000  
isleafwight@  
bonhams.com

**Brighton & Hove**

Representative:  
Tim Squire-Sanders  
+44 1273 220 000  
hove@bonhams.com

**West Sussex**

+44 (0) 1273 220 000  
sussex@  
bonhams.com

**South West  
England****Bath**

Queen Square House  
Charlotte Street  
Bath, BA1 2LL  
+44 1225 788 988  
bath@bonhams.com

**Cornwall - Truro**

36 Lemon Street  
Truro  
Cornwall  
TR1 2NR  
+44 1872 250 170  
truro@bonhams.com

**Exeter**

The Lodge  
Southernhay West  
Exeter, Devon  
EX1 1JG  
+44 1392 425 264  
exeter@bonhams.com

**Tetbury**

Eight Bells House  
14 Church Street  
Tetbury  
Gloucestershire  
GL8 8JG  
+44 1666 502 200  
tetbury\_office@  
bonhams.com

**Dorset**

Representatives:  
Matthew Lacey  
+44 1935 815 271

**East Anglia and  
Bury St. Edmunds**

Michael Steel  
+44 1284 716 190  
bury@bonhams.com

**Norfolk**

The Market Place  
Reepham  
Norfolk, NR10 4JJ  
+44 1603 871 443  
norfolk@  
bonhams.com

**Midlands****Knowle**

The Old House  
Station Road  
Knowle, Solihull  
West Midlands  
B93 0HT  
+44 1564 776 151  
knowle@  
bonhams.com

**Oxford**

Banbury Road  
Shipton on Cherwell  
Kidlington OX5 1JH  
+44 1865 853 640  
oxford@  
bonhams.com

Bonhams MPH  
The Guard House  
Bicester Heritage  
Bicester, Oxfordshire  
OX26 5HA  
+44 1869 229 477  
mph@bonhams.com

**Yorkshire & North  
East England****Leeds**

The West Wing  
Bowcliffe Hall  
Bramham  
Leeds, LS23 6LP  
+44 113 234 5755  
leeds@bonhams.com

**North West England****Chester**

2 St Johns Court  
Vicars Lane  
Chester, CH1 1QE  
+44 1244 313 936  
chester@  
bonhams.com

**Manchester**

The Stables  
213 Ashley Road  
Hale, WA15 9TB  
+44 161 927 3822  
manchester@  
bonhams.com

**Channel Islands****Jersey**

La Chasse  
La Rue de la Vallee  
St Mary  
Jersey, JE3 3DL  
+44 1534 722 441  
jersey@bonhams.com

**Guernsey**

Representative:  
+44 1481 722 448  
guernsey@  
bonhams.com

**Scotland****Bonhams West  
of Scotland**

Kirkhill House  
Broom Road East  
Newton Mearns  
Glasgow, G77 5LL  
+44 141 223 8866  
glasgow@  
bonhams.com

**Wales**

Representatives:  
**Cardiff**  
Jeff Muse  
+44 2920 727 980  
cardiff@bonhams.com

# Auction Registration Form

(Attendee / Absentee / Online / Telephone Bidding)

Please circle your bidding method above.

--	--	--	--

**Paddle number (for office use only)**

**General Notice:** This sale will be conducted in accordance with Bonhams Conditions of Sale, and your bidding and buying at the sale will be governed by such terms and conditions. Please read the Conditions of Sale in conjunction with the Buyer's Guide relating to this sale and other published notices and terms relating to bidding. Payment by personal or business check may result in your property not being released until purchase funds clear our bank. Checks must be drawn on a U.S. bank.

**Notice to Absentee Bidders:** In the table below, please provide details of the lots on which you wish to place bids at least 24 hours prior to the sale. Bids will be rounded down to the nearest increment. Please refer to the Buyer's Guide in the catalog for further information relating to instructions to Bonhams to execute absentee bids on your behalf. Bonhams will endeavor to execute bids on your behalf but will not be liable for any errors or non-executed bids.

**Notice to First Time Bidders:** New clients are requested to provide photographic proof of ID - passport, driving license, ID card, together with proof of address - utility bill, bank or credit card statement etc. Corporate clients should also provide a copy of their articles of association / company registration documents, together with a letter authorizing the individual to bid on the company's behalf. Failure to provide this may result in your bids not being processed. For higher value lots you may also be asked to provide a bankers reference.

**Notice to online bidders;** If you have forgotten your username and password for [www.bonhams.com](http://www.bonhams.com), please contact Client Services.

**If successful**

- I will collect the purchases myself
- Please contact me with a shipping quote (if applicable)
- I will arrange a third party to collect my purchase(s)

**Please email or fax the completed Registration Form and requested information to:**

Bonhams Client Services Department  
580 Madison Avenue  
New York, New York 10022  
Tel +1 (212) 644 9001  
Fax +1 (212) 644 9009  
bids.us@bonhams.com

# Bonhams

Sale title: New York Jewels		Sale date: Sunday, December 8, 2019	
Sale no. 25501		Sale venue: New York	
<b>General Bid Increments:</b>			
\$10 - 200 .....by 10s		\$10,000 - 20,000 .....by 1,000s	
\$200 - 500 .....by 20 / 50 / 80s		\$20,000 - 50,000 .....by 2,000 / 5,000 / 8,000s	
\$500 - 1,000 .....by 50s		\$50,000 - 100,000 .....by 5,000s	
\$1,000 - 2,000 .....by 100s		\$100,000 - 200,000 .....by 10,000s	
\$2,000 - 5,000 .....by 200 / 500 / 800s		above \$200,000 .....at the auctioneer's discretion	
\$5,000 - 10,000 .....by 500s		The auctioneer has discretion to split any bid at any time.	
Customer Number		Title	
First Name		Last Name	
Company name (to be invoiced if applicable)			
Address			
City		County / State	
Post / Zip code		Country	
Telephone mobile		Telephone daytime	
Telephone evening		Fax	
Telephone bidders: indicate primary and secondary contact numbers by writing ① or ② next to the telephone number.			
E-mail (in capitals) _____			
By providing your email address above, you authorize Bonhams to send you marketing materials and news concerning Bonhams and partner organizations. Bonhams does not sell or trade email addresses.			
I am registering to bid as a private client <input type="checkbox"/>		I am registering to bid as a trade client <input type="checkbox"/>	
Resale: please enter your resale license number here _____ We may contact you for additional information.			

SHIPPING	
Shipping Address (if different than above):	
Address: _____	Country: _____
City: _____	Post/ZIP code: _____

**Please note that all telephone calls are recorded.**

Type of bid (A-Absentee, T-Telephone)	Lot no.	Brief description (In the event of any discrepancy, lot number and not lot description will govern.) If you are bidding online there is no need to complete this section.	MAX bid in US\$ (excluding premium and applicable tax) Emergency bid for telephone bidders only*

**You instruct us to execute each absentee bid up to the corresponding bid amount indicated above.**

\* Emergency Bid: A maximum bid (exclusive of Buyer's Premium and tax) to be executed by Bonhams **only** if we are unable to contact you by telephone or should the connection be lost during bidding.

BY SIGNING THIS FORM YOU AGREE THAT YOU HAVE READ AND UNDERSTAND OUR CONDITIONS OF SALE AND SHALL BE LEGALLY BOUND BY THEM, AND YOU AGREE TO PAY THE BUYER'S PREMIUM, ANY APPLICABLE TAXES, AND ANY OTHER CHARGES MENTIONED IN THE BUYER'S GUIDE OR CONDITIONS OF SALE. THIS AFFECTS YOUR LEGAL RIGHTS.	
Your signature: _____	Date: _____





**Bonhams**  
580 Madison Avenue  
New York, New York 10022

---

+1 (212) 644 9001  
bonhams.com

**AUCTIONEERS SINCE 1793**